

Product Datasheet

PDCD1LG2 Antibody (orb1239853)

Description

PDCD1LG2 Antibody

Species/Host

Mouse

Reactivity

Human

Conjugation

Unconjugated

Tested

ELISA, FC, ICC, IF, IHC-P, WB

Applications

Immunogen

PD-L2 antibody was raised against the extracellular domain of human PD-L2.

Target

PDCD1LG2

Preservatives

PD-L2 Antibody is supplied in PBS containing 0.02% sodium azide and 50% glycerol.

Form/Appearance

Liquid

Concentration

1 mg/mL

Storage

PD-L2 antibody can be stored at 4°C for three months and -20°C, stable for up to one year. As with all antibodies care should be taken to avoid repeated freeze thaw cycles. Antibodies should not be exposed to prolonged high temperatures.

Note

For research use only

Application notes

PD-L2 antibody can be used for detection of PD-L2 by Western blot at 0.5 - 1 µg/mL. Antibody can also be used for immunohistochemistry starting at 2 µg/mL. For immunofluorescence start at 20 µg/mL. Antibody validated: Western Blot in human samples; Immunohistochemistry in human samples; Immunocytochemistry in human samples; Immunofluorescence in human samples and Flow Cytometry in mouse samples. All other applications and species not yet tested.

Isotype

IgG1

Clonality

Monoclonal

MW

Predicted: 30 kDa Observed: 38 kDa

Uniprot ID

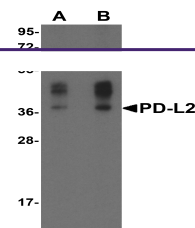
[P9BQ51](#)

NCBI

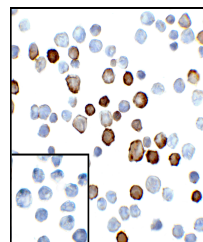
[NP_079515](#)

Dilution Range

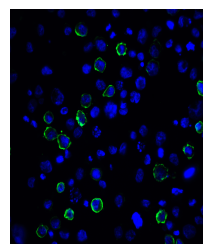
PD-L2 antibody can be used for detection of PD-L2 by Western blot at 0.5 - 1 µg/mL. Antibody can also be used for immunohistochemistry starting at 2 µg/mL. For immunofluorescence start at 20 µg/mL. Antibody validated: Western Blot in human



Western blot analysis of PD-L2 in overex...



Immunocytochemistry of PD-L2 in transfect...



Immunofluorescence of PD-L2 in transfect...