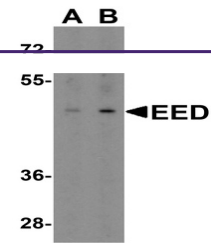
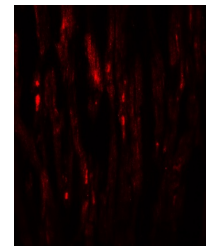

Product Datasheet

EED Antibody (orb1239847)

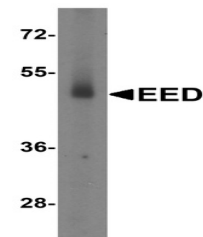
Description	EED Antibody
Species/Host	Rabbit
Reactivity	Human, Mouse, Rat
Conjugation	Unconjugated
Tested Applications	ELISA, IF, WB
Immunogen	EED antibody was raised against an 18 amino acid synthetic peptide near the amino terminus of human EED. The immunogen is located within amino acids 30 - 80 of EED.
Target	EED
Preservatives	EED Antibody is supplied in PBS containing 0.02% sodium azide.
Form/Appearance	Liquid
Concentration	1 mg/mL
Storage	EED antibody can be stored at 4°C for three months and -20°C, stable for up to one year. As with all antibodies care should be taken to avoid repeated freeze thaw cycles. Antibodies should not be exposed to prolonged high temperatures.
Note	For research use only
Application notes	EED antibody can be used for detection of EED by Western blot at 2 µg/mL. For immunofluorescence start at 20 µg/mL. Antibody validated: Western Blot in human samples and Immunofluorescence in human samples. All other applications and species not yet tested.
Isotype	IgG
Clonality	Polyclonal
MW	Predicted: 49 kDa Observed: 49 kDa
Uniprot ID	O75530
NCBI	NP_003788
Dilution Range	EED antibody can be used for detection of EED by Western blot at 2 µg/mL. For immunofluorescence start at 20 µg/mL. Antibody validated: Western Blot in human samples and Immunofluorescence in human samples. All other applications and species not yet tested.



Western blot analysis of EED in human he...



Immunofluorescence of EED in human heart...



Western blot analysis of EED expression ...