
Product Datasheet

EFCAB4B Antibody (orb1239846)

Description

EFCAB4B Antibody

Species/Host

Rabbit

Reactivity

Human, Mouse

Conjugation

Unconjugated

Tested

ELISA, IF, IHC-P, WB

Applications
Immunogen

EFCAB4B antibody was raised against a 14 amino acid synthetic peptide near the carboxy terminus of human EFCAB4B. The immunogen is located within amino acids 640 - 690 of EFCAB4B.

Target

EFCAB4B

Preservatives

EFCAB4B Antibody is supplied in PBS containing 0.02% sodium azide.

Form/Appearance

Liquid

Concentration

1 mg/mL

Storage

EFCAB4B antibody can be stored at 4°C for three months and -20°C, stable for up to one year. As with all antibodies care should be taken to avoid repeated freeze thaw cycles. Antibodies should not be exposed to prolonged high temperatures.

Note

For research use only

Application notes

EFCAB4B antibody can be used for detection of EFCAB4B by Western blot at 1 µg/mL. Antibody can also be used for immunohistochemistry starting at 10 µg/mL. For immunofluorescence start at 20 µg/mL. Antibody validated: Western Blot in mouse samples; Immunohistochemistry in human samples and Immunofluorescence in human samples. All other applications and species not yet tested.

Isotype

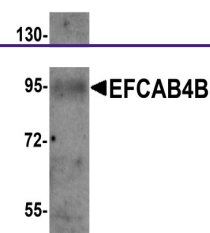
IgG

Clonality

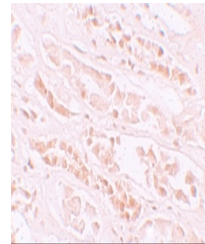
Polyclonal

Uniprot ID
[Q9BSW2](#)
NCBI
[NP_001138430](#)
Dilution Range

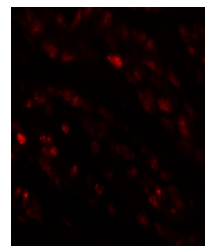
EFCAB4B antibody can be used for detection of EFCAB4B by Western blot at 1 µg/mL. Antibody can also be used for immunohistochemistry starting at 10 µg/mL. For immunofluorescence start at 20 µg/mL. Antibody validated: Western Blot in mouse samples; Immunohistochemistry in human samples



Western blot analysis of EFCAB4B in mouse...



Immunohistochemistry of EFCAB4B in human...



Immunofluorescence of EFCAB4B in human k...