

---

## Product Datasheet

### El24 Antibody (orb1239843)

**Description**

EI24 Antibody

**Species/Host**

Rabbit

**Reactivity**

Human, Mouse, Rat

**Conjugation**

Unconjugated

**Tested Applications**

ELISA, IHC-P, WB

**Immunogen**

EI24 antibody was raised against a 19 amino acid synthetic peptide near the carboxy terminus of human EI24. The immunogen is located within the last 50 amino acids of EI24.

**Target**

EI24

**Preservatives**

EI24 Antibody is supplied in PBS containing 0.02% sodium azide.

**Form/Appearance**

Liquid

**Concentration**

1 mg/mL

**Storage**

EI24 antibody can be stored at 4°C for three months and -20°C, stable for up to one year. As with all antibodies care should be taken to avoid repeated freeze thaw cycles. Antibodies should not be exposed to prolonged high temperatures.

**Note**

For research use only

**Application notes**

EI24 antibody can be used for detection of EI24 by Western blot at 1 - 2 µg/mL. Antibody can also be used for immunohistochemistry starting at 5 µg/mL. Antibody validated: Western Blot in rat samples and Immunohistochemistry in rat samples. All other applications and species not yet tested.

**Isotype**

IgG

**Clonality**

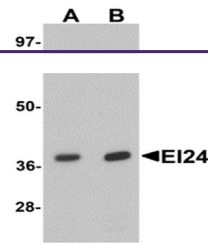
Polyclonal

**Uniprot ID**
[O14681](#)
**NCBI**
[NP\\_004870](#)
**Dilution Range**

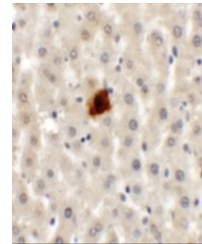
EI24 antibody can be used for detection of EI24 by Western blot at 1 - 2 µg/mL. Antibody can also be used for immunohistochemistry starting at 5 µg/mL. Antibody validated: Western Blot in rat samples and Immunohistochemistry in rat samples. All other applications and species not yet tested.

**Expiration Date**

12 months from date of receipt.



Western blot analysis of EI24 in rat liv...



Immunohistochemistry of EI24 in rat live...