
Product Datasheet

ELOVL6 Antibody (orb1239841)

Description

ELOVL6 Antibody

Species/Host

Rabbit

Reactivity

Human, Mouse, Rat

Conjugation

Unconjugated

Tested Applications

ELISA, IF, IHC-P, WB

Immunogen

ELOVL6 antibody was raised against a 15 amino acid synthetic peptide near the amino terminus of the human ELOVL6. The immunogen is located within the first 50 amino acids of ELOVL6.

Target

ELOVL6

Preservatives

ELOVL6 Antibody is supplied in PBS containing 0.02% sodium azide.

Form/Appearance

Liquid

Concentration

1 mg/mL

Storage

ELOVL6 antibody can be stored at 4°C for three months and -20°C, stable for up to one year. As with all antibodies care should be taken to avoid repeated freeze thaw cycles. Antibodies should not be exposed to prolonged high temperatures.

Note

For research use only

Application notes

ELOVL6 antibody can be used for detection of ELOVL6 by Western blot at 1 - 2 µg/mL. Antibody can also be used for immunohistochemistry starting at 5 µg/mL. For immunofluorescence start at 20 µg/mL. Antibody validated: Western Blot in human samples; Immunohistochemistry in human samples and Immunofluorescence in human samples. All other applications and species not yet tested.

Isotype

IgG

Clonality

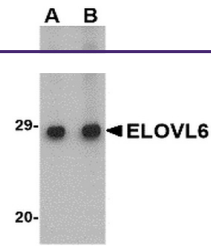
Polyclonal

MW

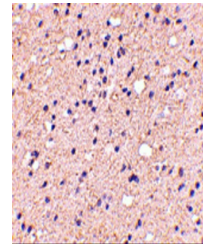
Predicted: 29 kDa Observed: 28 kDa

Uniprot ID
[Q9H5J4](#)
NCBI
[NP_076995](#)
Dilution Range

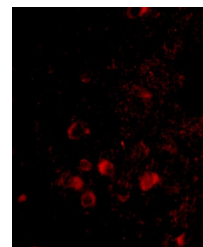
ELOVL6 antibody can be used for detection of ELOVL6 by Western blot at 1 - 2 µg/mL. Antibody can also be used for immunohistochemistry starting at 5 µg/mL. For immunofluorescence start at 20 µg/mL. Antibody validated: Western Blot in human



Western blot analysis of ELOVL6 in Human...



Immunohistochemistry of ELOVL6 in human ...



Immunofluorescence of ELOVL6 in Human Br...