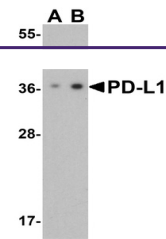


---

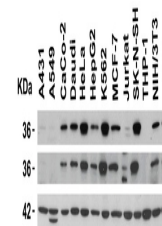
## Product Datasheet

### CD274 Antibody (orb1239835)

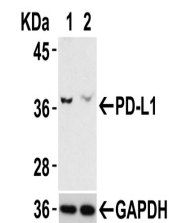
<b>Description</b>	CD274 Antibody
<b>Species/Host</b>	Rabbit
<b>Reactivity</b>	Human, Mouse, Rat
<b>Conjugation</b>	Unconjugated
<b>Tested Applications</b>	ELISA, FC, IF, IHC-P, WB
<b>Immunogen</b>	Anti-PD-L1 antibody (orb1239835) was raised against a peptide corresponding to 17 amino acids near the center of human PD-L1 isoform 1. The immunogen is located within amino acids 60 - 110 of PD-L1.
<b>Target</b>	CD274
<b>Preservatives</b>	PD-L1 Antibody is supplied in PBS containing 0.02% sodium azide.
<b>Form/Appearance</b>	Liquid
<b>Concentration</b>	1 mg/mL
<b>Storage</b>	PD-L1 antibody can be stored at 4°C for three months and -20°C, stable for up to one year. As with all antibodies care should be taken to avoid repeated freeze thaw cycles. Antibodies should not be exposed to prolonged high temperatures.
<b>Note</b>	For research use only
<b>Isotype</b>	IgG
<b>Clonality</b>	Polyclonal
<b>MW</b>	Predicted: 33 kDa Observed: 37 kDa
<b>Uniprot ID</b>	<a href="#">Q9NZQ7</a>
<b>NCBI</b>	<a href="#">NP_054862</a>
<b>Dilution Range</b>	WB: 1-2 µg/mL; IHC-P: 2.5-5 µg/mL; IF: 20 µg/mL; Flow Cyt: 0.5 µg/mL. Antibody validated: Western Blot in human and mouse samples; Immunohistochemistry in human and rat samples; Immunofluorescence in human and rat samples and Flow Cytometry in mouse samples. All other applications and species not yet tested.
<b>Expiration Date</b>	12 months from date of receipt.



Western Blot Validation of PD-L1 in HeLa...



Independent Antibody Validation (IAV) vi...



Validation with PD-L1 siRNA Knockdown in...