

---

## Product Datasheet

### PDIA4 Antibody (orb1239828)

**Description**

PDIA4 Antibody

**Species/Host**

Rabbit

**Reactivity**

Human, Mouse, Rat

**Conjugation**

Unconjugated

**Tested Applications**

ELISA, IF, IHC-P, WB

**Immunogen**

ERp72 antibody was raised against a 15 amino acid peptide near the carboxy terminus of human ERp72. The immunogen is located within the last 50 amino acids of ERp72.

**Target**

PDIA4

**Preservatives**

ERp72 antibody is supplied in PBS containing 0.02% sodium azide.

**Form/Appearance**

Liquid

**Concentration**

1 mg/mL

**Storage**

ERp72 antibody can be stored at 4°C for three months and -20°C, stable for up to one year.

**Note**

For research use only

**Application notes**

ERp72 antibody can be used for detection of ERp72 by Western blot at 1 - 2 µg/ml. Antibody can also be used for immunohistochemistry starting at 5 µg/mL. For immunofluorescence start at 20 µg/mL. Antibody validated: Western Blot in human samples; Immunohistochemistry in rat samples and Immunofluorescence in rat samples. All other applications and species not yet tested.

**Isotype**

IgG

**Clonality**

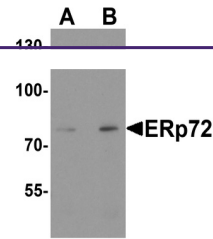
Polyclonal

**MW**

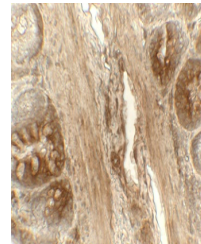
Predicted: 71 kDa Observed: 75 kDa

**Uniprot ID**
[P13667](#)
**NCBI**
[NP\\_004902](#)
**Dilution Range**

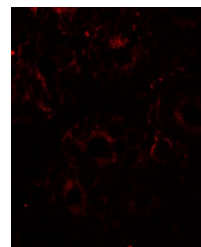
ERp72 antibody can be used for detection of ERp72 by Western blot at 1 - 2 µg/ml. Antibody can also be used for immunohistochemistry starting at 5 µg/mL. For immunofluorescence start at 20 µg/mL. Antibody validated: Western Blot in human samples; Immunohistochemistry in rat samples and Immunofluorescence in rat samples. All other applications and species not yet tested.



Western blot analysis of ERp72 in human ...



Immunohistochemistry of ERp72 in rat col...



Immunofluorescence of ERp72 in rat colon...