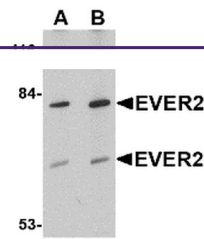
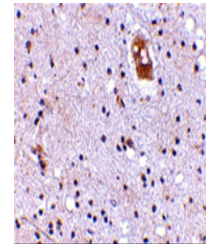

Product Datasheet

TMC8 Antibody (orb1239821)

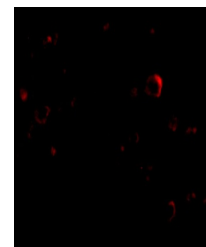
Description	TMC8 Antibody
Species/Host	Rabbit
Reactivity	Human, Mouse, Rat
Conjugation	Unconjugated
Tested Applications	ELISA, IF, IHC-P, WB
Immunogen	EVER2 antibody was raised against a 14 amino acid synthetic peptide from near the center of human EVER2. The immunogen is located within amino acids 300 - 350 of EVER2.
Target	TMC8
Preservatives	EVER2 Antibody is supplied in PBS containing 0.02% sodium azide.
Form/Appearance	Liquid
Concentration	1 mg/mL
Storage	EVER2 antibody can be stored at 4°C for three months and -20°C, stable for up to one year. As with all antibodies care should be taken to avoid repeated freeze thaw cycles. Antibodies should not be exposed to prolonged high temperatures.
Note	For research use only
Application notes	EVER2 antibody can be used for detection of EVER2 by Western blot at 1 - 2 µg/mL. Antibody can also be used for immunohistochemistry starting at 5 µg/mL. For immunofluorescence start at 20 µg/mL. Antibody validated: Western Blot in human samples; Immunohistochemistry in human samples and Immunofluorescence in human samples. All other applications and species not yet tested.
Isotype	IgG
Clonality	Polyclonal
Uniprot ID	Q8IU68
NCBI	AAM44454
Dilution Range	EVER2 antibody can be used for detection of EVER2 by Western blot at 1 - 2 µg/mL. Antibody can also be used for immunohistochemistry starting at 5 µg/mL. For immunofluorescence start at 20 µg/mL. Antibody validated: Western Blot in human samples; Immunohistochemistry in human samples and



Western blot analysis of EVER2 in Jurkat...



Immunohistochemistry of EVER2 in human b...



Immunofluorescence of EVER2 in Human Bra...