

---

## Product Datasheet

### FAIM2 Antibody (orb1239815)

**Description**

FAIM2 Antibody

**Species/Host**

Rabbit

**Reactivity**

Human, Mouse, Rat

**Conjugation**

Unconjugated

**Tested Applications**

ELISA, IHC-P, WB

**Immunogen**

FAIM2 antibody was raised against a 16 amino acid synthetic peptide from near the amino terminus of human FAIM2. The immunogen is located within the first 50 amino acids of FAIM2.

**Target**

FAIM2

**Preservatives**

FAIM2 Antibody is supplied in PBS containing 0.02% sodium azide.

**Form/Appearance**

Liquid

**Concentration**

1 mg/ml

**Storage**

FAIM2 antibody can be stored at 4°C for three months and -20°C, stable for up to one year. As with all antibodies care should be taken to avoid repeated freeze thaw cycles. Antibodies should not be exposed to prolonged high temperatures.

**Note**

For research use only

**Application notes**

FAIM2 antibody can be used for detection of FAIM2 by Western blot at 0.5 - 1 µg/mL. Antibody can also be used for immunohistochemistry starting at 5 µg/mL. Antibody validated: Western Blot in mouse samples and Immunohistochemistry in mouse samples. All other applications and species not yet tested.

**Isotype**

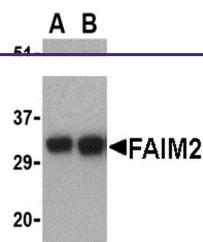
IgG

**Clonality**

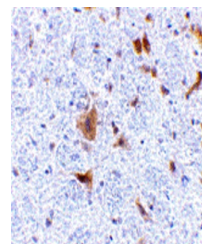
Polyclonal

**Uniprot ID**
[Q9BWQ8](#)
**NCBI**
[AAF06327](#)
**Dilution Range**

FAIM2 antibody can be used for detection of FAIM2 by Western blot at 0.5 - 1 µg/mL. Antibody can also be used for immunohistochemistry starting at 5 µg/mL. Antibody validated: Western Blot in mouse samples and Immunohistochemistry in mouse samples. All other applications and species not yet tested.



Western blot analysis of FAIM2 in EL4 ce...



Immunohistochemistry of FAIM2 in mouse b...