
Product Datasheet

FAM59A Antibody (orb1239812)

Description

FAM59A Antibody

Species/Host

Rabbit

Reactivity

Human, Mouse, Rat

Conjugation

Unconjugated

Tested

ELISA, IF, IHC-P, WB

Applications
Immunogen

FAM59A antibody was raised against a 19 amino acid synthetic peptide from near the carboxy terminus of human FAM59A. The immunogen is located within amino acids 630 - 680 of FAM59A.

Target

FAM59A

Preservatives

FAM59A Antibody is supplied in PBS containing 0.02% sodium azide.

Form/Appearance

Liquid

Concentration

1 mg/mL

Storage

FAM59A antibody can be stored at 4°C for three months and -20°C, stable for up to one year. As with all antibodies care should be taken to avoid repeated freeze thaw cycles. Antibodies should not be exposed to prolonged high temperatures.

Note

For research use only

Application notes

FAM59A antibody can be used for detection of FAM59A by Western blot at 1 - 2 µg/mL. Antibody can also be used for immunohistochemistry starting at 5 µg/mL. For immunofluorescence start at 20 µg/mL. Antibody validated: Western Blot in rat samples; Immunohistochemistry in human samples and Immunofluorescence in human samples. All other applications and species not yet tested.

Isotype

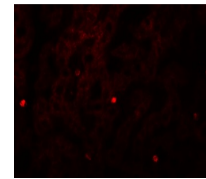
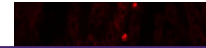
IgG

Clonality

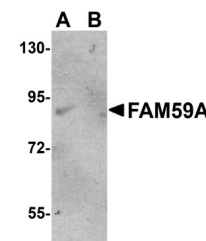
Polyclonal

Uniprot ID
[Q9H706](#)
NCBI
[Q9H706](#)
Dilution Range

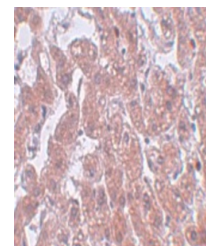
FAM59A antibody can be used for detection of FAM59A by Western blot at 1 - 2 µg/mL. Antibody can also be used for immunohistochemistry starting at 5 µg/mL. For immunofluorescence start at 20 µg/mL. Antibody validated: Western Blot in rat samples; Immunohistochemistry in human samples



Immunofluorescence of FAM59A in Human Liver



Western blot analysis of FAM59A in rat liver



Immunohistochemistry of PLEKHM3 in human tissue