
Product Datasheet

FAM59B Antibody (orb1239811)

Description

FAM59B Antibody

Species/Host

Rabbit

Reactivity

Human, Mouse, Rat

Conjugation

Unconjugated

Tested

ELISA, IF, IHC-P, WB

Applications
Immunogen

FAM59B antibody was raised against a 19 amino acid synthetic peptide from near the carboxy terminus of human FAM59B. The immunogen is located within amino acids 600 - 650 of FAM59B.

Target

FAM59B

Preservatives

FAM59B Antibody is supplied in PBS containing 0.02% sodium azide.

Form/Appearance

Liquid

Concentration

1 mg/mL

Storage

FAM59B antibody can be stored at 4°C for three months and -20°C, stable for up to one year. As with all antibodies care should be taken to avoid repeated freeze thaw cycles. Antibodies should not be exposed to prolonged high temperatures.

Note

For research use only

Application notes

FAM59B antibody can be used for detection of FAM59B by Western blot at 1 µg/mL. Antibody can also be used for immunohistochemistry starting at 5 µg/mL. For immunofluorescence start at 20 µg/mL. Antibody validated: Western Blot in human samples; Immunohistochemistry in human samples and Immunofluorescence in human samples. All other applications and species not yet tested.

Isotype

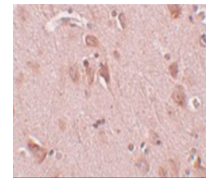
IgG

Clonality

Polyclonal

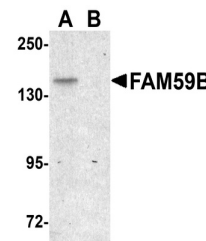
Uniprot ID
[Q75VX8](#)
NCBI
[Q75VX8](#)
Dilution Range

FAM59B antibody can be used for detection of FAM59B by Western blot at 1 µg/mL. Antibody can also be used for immunohistochemistry starting at 5 µg/mL. For immunofluorescence start at 20 µg/mL. Antibody validated: Western Blot in human samples; Immunohistochemistry in human samples

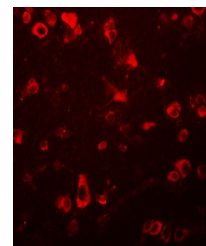


Immunohistochemistry of FAM59B in human

...



Western blot analysis of FAM59B in SK-N-...



Immunofluorescence of FAM59B in Human Br...