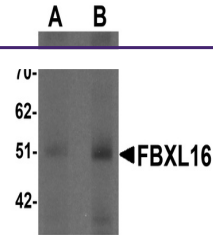
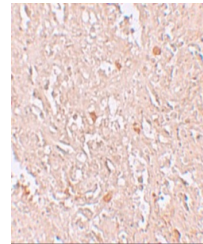

Product Datasheet

FBXL16 Antibody (orb1239809)

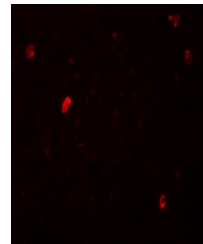
Description	FBXL16 Antibody
Species/Host	Rabbit
Reactivity	Human, Mouse, Rat
Conjugation	Unconjugated
Tested Applications	ELISA, IF, IHC-P, WB
Immunogen	FBXL16 antibody was raised against an 18 amino acid synthetic peptide near the carboxy terminus of human FBXL16. The immunogen is located within the last 50 amino acids of FBXL16.
Target	FBXL16
Preservatives	FBXL16 Antibody is supplied in PBS containing 0.02% sodium azide.
Form/Appearance	Liquid
Concentration	1 mg/mL
Storage	FBXL16 antibody can be stored at 4°C for three months and -20°C, stable for up to one year. As with all antibodies care should be taken to avoid repeated freeze thaw cycles. Antibodies should not be exposed to prolonged high temperatures.
Note	For research use only
Application notes	FBXL16 antibody can be used for detection of FBXL16 by Western blot at 0.5 - 1 µg/mL. Antibody can also be used for immunohistochemistry starting at 5 µg/mL. For immunofluorescence start at 20 µg/mL. Antibody validated: Western Blot in human samples; Immunohistochemistry in human samples and Immunofluorescence in human samples. All other applications and species not yet tested.
Isotype	IgG
Clonality	Polyclonal
Uniprot ID	Q8N461
NCBI	NP_699181
Dilution Range	FBXL16 antibody can be used for detection of FBXL16 by Western blot at 0.5 - 1 µg/mL. Antibody can also be used for immunohistochemistry starting at 5 µg/mL. For immunofluorescence start at 20 µg/mL. Antibody validated: Western Blot in human samples; Immunohistochemistry in human samples



Western blot analysis of FBXL16 in human...



Immunohistochemistry of FBXL16 in human ...



Immunofluorescence of FBXL16 in human sp...