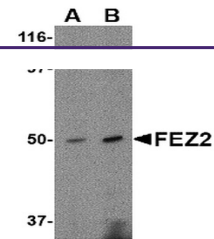
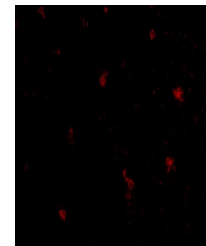

Product Datasheet

FEZ2 Antibody (orb1239807)

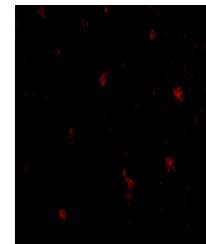
Description	FEZ2 Antibody
Species/Host	Rabbit
Reactivity	Human, Mouse, Rat
Conjugation	Unconjugated
Tested Applications	ELISA, IF, WB
Immunogen	FEZ2 antibody was raised against a 15 amino acid synthetic peptide from near the carboxy terminus of human FEZ2. The immunogen is located within the last 50 amino acids of FEZ2.
Target	FEZ2
Preservatives	FEZ2 Antibody is supplied in PBS containing 0.02% sodium azide.
Form/Appearance	Liquid
Concentration	1 mg/mL
Storage	FEZ2 antibody can be stored at 4°C for three months and -20°C, stable for up to one year. As with all antibodies care should be taken to avoid repeated freeze thaw cycles. Antibodies should not be exposed to prolonged high temperatures.
Note	For research use only
Application notes	FEZ2 antibody can be used for the detection of FEZ2 by Western blot at 0.5 - 1 µg/mL. Antibody can also be used for immunofluorescence starting at 5 µg/mL. For immunofluorescence start at 5 µg/mL. Antibody validated: Western Blot in mouse samples and Immunofluorescence in human samples. All other applications and species not yet tested.
Isotype	IgG
Clonality	Polyclonal
Uniprot ID	Q9UHY8
NCBI	NP_001036013
Dilution Range	FEZ2 antibody can be used for the detection of FEZ2 by Western blot at 0.5 - 1 µg/mL. Antibody can also be used for immunofluorescence starting at 5 µg/mL. For immunofluorescence start at 5 µg/mL. Antibody validated: Western Blot in mouse samples and Immunofluorescence in human samples. All other applications and species not yet tested.



Western blot analysis of FEZ2 in mouse brain tissue.



Immunofluorescence of human brain tissue showing FEZ2 localization.



Immunofluorescence of FEZ2 in Human Brain tissue.