

---

## Product Datasheet

### FEZ2 Antibody (orb1239806)

**Description**

FEZ2 Antibody

**Species/Host**

Rabbit

**Reactivity**

Human, Mouse, Rat

**Conjugation**

Unconjugated

**Tested Applications**

ELISA, IF, WB

**Applications**
**Immunogen**

FEZ2 antibody was raised against a 15 amino acid synthetic peptide from near the center of human FEZ2. The immunogen is located within amino acids 160 - 210 of FEZ2.

**Target**

FEZ2

**Preservatives**

FEZ2 Antibody is supplied in PBS containing 0.02% sodium azide.

**Form/Appearance**

Liquid

**Concentration**

1 mg/mL

**Storage**

FEZ2 antibody can be stored at 4°C for three months and -20°C, stable for up to one year. As with all antibodies care should be taken to avoid repeated freeze thaw cycles. Antibodies should not be exposed to prolonged high temperatures.

**Note**

For research use only

**Application notes**

FEZ2 antibody can be used for the detection of FEZ2 by Western blot at 0.5 - 1 µg/mL. Antibody can also be used for immunofluorescence starting at 5 µg/mL. For immunofluorescence start at 5 µg/mL. Antibody validated: Western Blot in mouse samples and Immunofluorescence in human samples. All other applications and species not yet tested.

**Isotype**

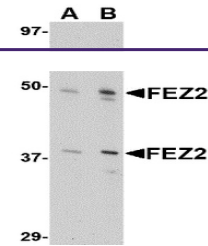
IgG

**Clonality**

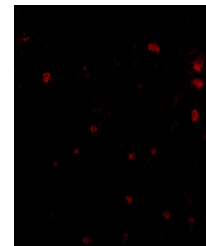
Polyclonal

**Uniprot ID**
[Q9UHY8](#)
**NCBI**
[NP\\_001036013](#)
**Dilution Range**

FEZ2 antibody can be used for the detection of FEZ2 by Western blot at 0.5 - 1 µg/mL. Antibody can also be used for immunofluorescence starting at 5 µg/mL. For immunofluorescence start at 5 µg/mL. Antibody validated: Western Blot in mouse samples and Immunofluorescence in human samples. All other applications and species not yet tested.



Western blot analysis of FEZ2 in 3T3 cel...



Immunofluorescence of human brain tissue...