

---

## Product Datasheet

### EFEMP1 Antibody (orb1239802)

**Description**

EFEMP1 Antibody

**Species/Host**

Rabbit

**Reactivity**

Human, Mouse, Rat

**Conjugation**

Unconjugated

**Tested Applications**

ELISA, ICC, IF, WB

**Immunogen**

Fibulin 3 antibody was raised against a 19 amino acid synthetic peptide near the carboxy terminus of human Fibulin 3. The immunogen is located within amino acids 410 - 460 of Fibulin 3.

**Target**

EFEMP1

**Preservatives**

Fibulin 3 Antibody is supplied in PBS containing 0.02% sodium azide.

**Form/Appearance**

Liquid

**Concentration**

1 mg/mL

**Storage**

Fibulin 3 antibody can be stored at 4°C for three months and -20°C, stable for up to one year. As with all antibodies care should be taken to avoid repeated freeze thaw cycles. Antibodies should not be exposed to prolonged high temperatures.

**Note**

For research use only

**Application notes**

Fibulin 3 antibody can be used for detection of Fibulin 3 by Western blot at 0.5 - 1 µg/mL. Antibody can also be used for immunocytochemistry starting at 20 µg/mL. For immunofluorescence start at 20 µg/mL. Antibody validated: Western Blot in human samples; Immunocytochemistry in human samples and Immunofluorescence in human samples. All other applications and species not yet tested.

**Isotype**

IgG

**Clonality**

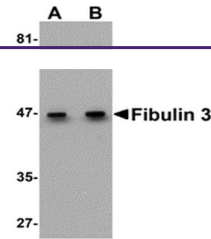
Polyclonal

**MW**

Predicted: 52 kDa Observed: 47 kDa

**Uniprot ID**
[Q12805](#)
**NCBI**
[NP\\_001034437](#)
**Dilution Range**

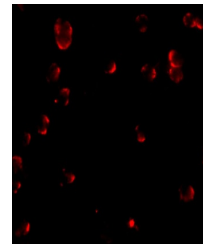
Fibulin 3 antibody can be used for detection of Fibulin 3 by Western blot at 0.5 - 1 µg/mL. Antibody can also be used for immunocytochemistry starting at 20 µg/mL. For immunofluorescence start at 20 µg/mL. Antibody validated: Western Blot in human



Western blot analysis of Fibulin 3 in HeLa...



Immunocytochemistry of Fibulin 3 in HeLa...



Immunofluorescence of Fibulin 3 in HeLa ...