
Product Datasheet

FKBP15 Antibody (orb1239800)

Description

FKBP15 Antibody

Species/Host

Rabbit

Reactivity

Human, Mouse, Rat

Conjugation

Unconjugated

Tested

ELISA, IF, IHC-P, WB

Applications
Immunogen

FKBP15 antibody was raised against a 15 amino acid synthetic peptide from near the amino terminus of human FKBP15. The immunogen is located within amino acids 30 - 80 of FKBP15.

Target

FKBP15

Preservatives

FKBP15 Antibody is supplied in PBS containing 0.02% sodium azide.

Form/Appearance

Liquid

Concentration

1 mg/mL

Storage

FKBP15 antibody can be stored at 4°C for three months and -20°C, stable for up to one year. As with all antibodies care should be taken to avoid repeated freeze thaw cycles. Antibodies should not be exposed to prolonged high temperatures.

Note

For research use only

Application notes

FKBP15 antibody can be used for detection of FKBP15 by Western blot at 1 µg/mL. Antibody can also be used for immunohistochemistry starting at 2.5 µg/mL. For immunofluorescence start at 20 µg/mL. Antibody validated: Western Blot in mouse samples; Immunohistochemistry in mouse samples and Immunofluorescence in mouse samples. All other applications and species not yet tested.

Isotype

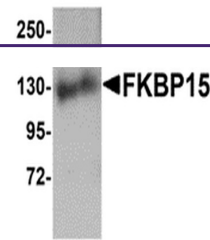
IgG

Clonality

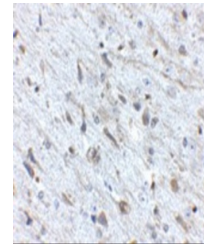
Polyclonal

Uniprot ID
[Q5T1M5](#)
NCBI
[NP_056073](#)
Dilution Range

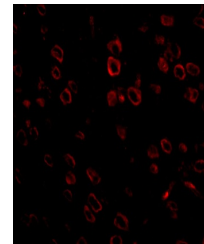
FKBP15 antibody can be used for detection of FKBP15 by Western blot at 1 µg/mL. Antibody can also be used for immunohistochemistry starting at 2.5 µg/mL. For immunofluorescence start at 20 µg/mL. Antibody validated: Western Blot in mouse samples; Immunohistochemistry in mouse samples



Western blot analysis of FKBP15 in 3T3 c...



Immunohistochemistry of FKBP15 in mouse ...



Immunofluorescence of FKBP15 in mouse br...