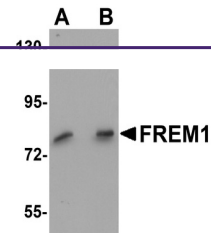
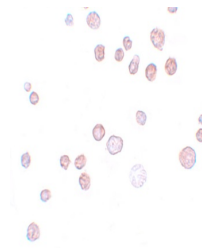

Product Datasheet

FREM1 Antibody (orb1239779)

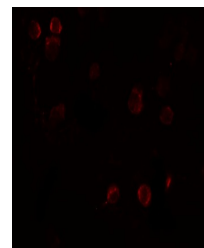
Description	FREM1 Antibody
Species/Host	Rabbit
Reactivity	Human, Mouse
Conjugation	Unconjugated
Tested Applications	ELISA, ICC, IF, WB
Immunogen	FREM1 antibody was raised against a 15 amino acid synthetic peptide near the carboxy terminus of human FREM1. The immunogen is located within the last 50 amino acids of FREM1.
Target	FREM1
Preservatives	FREM1 Antibody is supplied in PBS containing 0.02% sodium azide.
Form/Appearance	Liquid
Concentration	1 mg/mL
Storage	FREM1 antibody can be stored at 4°C for three months and -20°C, stable for up to one year. As with all antibodies care should be taken to avoid repeated freeze thaw cycles. Antibodies should not be exposed to prolonged high temperatures.
Note	For research use only
Application notes	FREM1 antibody can be used for detection of FREM1 by Western blot at 0.5 - 1 µg/mL. Antibody can also be used for immunocytochemistry starting at 20 µg/mL. For immunofluorescence start at 20 µg/mL. Antibody validated: Western Blot in human samples; Immunocytochemistry in human samples and Immunofluorescence in human samples. All other applications and species not yet tested.
Isotype	IgG
Clonality	Polyclonal
Uniprot ID	Q5H8C1
NCBI	NP_659403
Dilution Range	FREM1 antibody can be used for detection of FREM1 by Western blot at 0.5 - 1 µg/mL. Antibody can also be used for immunocytochemistry starting at 20 µg/mL. For immunofluorescence start at 20 µg/mL. Antibody validated: Western Blot in human samples; Immunocytochemistry in human samples



Western blot analysis of FREM1 in K562 c...



Immunocytochemistry of FREM1 in K562 cel...



Immunofluorescence of FREM1 in K562 cell...