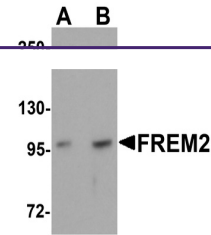
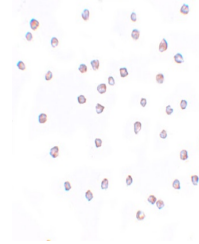

Product Datasheet

FREM2 Antibody (orb1239778)

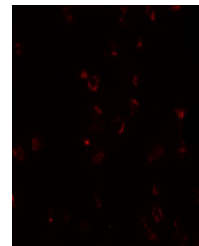
Description	FREM2 Antibody
Species/Host	Rabbit
Reactivity	Human, Mouse
Conjugation	Unconjugated
Tested Applications	ELISA, ICC, IF, WB
Immunogen	FREM2 antibody was raised against a 19 amino acid synthetic peptide near the center of human FREM2. The immunogen is located within amino acids 1920 - 1970 of FREM2.
Target	FREM2
Preservatives	FREM2 Antibody is supplied in PBS containing 0.02% sodium azide.
Form/Appearance	Liquid
Concentration	1 mg/mL
Storage	FREM2 antibody can be stored at 4°C for three months and -20°C, stable for up to one year. As with all antibodies care should be taken to avoid repeated freeze thaw cycles. Antibodies should not be exposed to prolonged high temperatures.
Note	For research use only
Application notes	FREM2 antibody was raised against a 19 amino acid peptide near the center of human FREM2. Antibody can also be used for immunocytochemistry starting at 20 µg/mL. For immunofluorescence start at 20 µg/mL. Antibody validated: Western Blot in mouse samples; Immunocytochemistry in mouse samples and Immunofluorescence in mouse samples. All other applications and species not yet tested.
Isotype	IgG
Clonality	Polyclonal
Uniprot ID	Q5SZK8
NCBI	NP_997244
Dilution Range	FREM2 antibody was raised against a 19 amino acid peptide near the center of human FREM2. Antibody can also be used for immunocytochemistry starting at 20 µg/mL. For immunofluorescence start at 20 µg/mL. Antibody validated: Western Blot in mouse samples; Immunocytochemistry in mouse samples



Western blot analysis of FREM2 in A-20 c...



Immunocytochemistry of FREM2 in A-20 cel...



Immunofluorescence of FREM2 in A20 cells...