
Product Datasheet

FRMPD2 Antibody (orb1239775)

Description

FRMPD2 Antibody

Species/Host

Rabbit

Reactivity

Human, Mouse, Rat

Conjugation

Unconjugated

Tested Applications

ELISA, IHC-P, WB

Immunogen

FRMPD2 antibody was raised against a 15 amino acid synthetic peptide from near the amino terminus of human FRMPD2. The immunogen is located within amino acids 80 - 130 of FRMPD2.

Target

FRMPD2

Preservatives

FRMPD2 Antibody is supplied in PBS containing 0.02% sodium azide.

Form/Appearance

Liquid

Concentration

1 mg/mL

Storage

FRMPD2 antibody can be stored at 4°C for three months and -20°C, stable for up to one year. As with all antibodies care should be taken to avoid repeated freeze thaw cycles. Antibodies should not be exposed to prolonged high temperatures.

Note

For research use only

Application notes

FRMPD2 antibody can be used for detection of FRMPD2 by Western blot at 1 - 2 µg/mL. Antibody can also be used for immunohistochemistry starting at 5 µg/mL. Antibody validated: Western Blot in rat samples and Immunohistochemistry in mouse samples. All other applications and species not yet tested.

Isotype

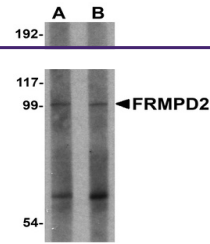
IgG

Clonality

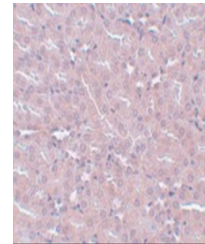
Polyclonal

Uniprot ID
[Q68DX3](#)
NCBI
[NP_001018081](#)
Dilution Range

FRMPD2 antibody can be used for detection of FRMPD2 by Western blot at 1 - 2 µg/mL. Antibody can also be used for immunohistochemistry starting at 5 µg/mL. Antibody validated: Western Blot in rat samples and Immunohistochemistry in mouse samples. All other applications and species not yet tested.



Western blot analysis of FRMPD2 in rat k...



Immunohistochemistry of FRMPD2 in mouse

...