
Product Datasheet

FRMPD3 Antibody (orb1239774)

Description

FRMPD3 Antibody

Species/Host

Rabbit

Reactivity

Human, Mouse

Conjugation

Unconjugated

Tested Applications

ELISA, IF, IHC-P, WB

Immunogen

FRMPD3 antibody was raised against an 18 amino acid synthetic peptide from near the center of human FRMPD3. The immunogen is located within amino acids 690 - 740 of FRMPD3.

Target

FRMPD3

Preservatives

FRMPD3 Antibody is supplied in PBS containing 0.02% sodium azide.

Form/Appearance

Liquid

Concentration

1 mg/mL

Storage

FRMPD3 antibody can be stored at 4°C for three months and -20°C, stable for up to one year. As with all antibodies care should be taken to avoid repeated freeze thaw cycles. Antibodies should not be exposed to prolonged high temperatures.

Note

For research use only

Application notes

FRMPD3 antibody can be used for detection of FRMPD3 by Western blot at 1 - 2 µg/mL. Antibody can also be used for immunohistochemistry starting at 5 µg/mL. For immunofluorescence start at 20 µg/mL. Antibody validated: Western Blot in human samples; Immunohistochemistry in human samples and Immunofluorescence in rat samples. All other applications and species not yet tested.

Isotype

IgG

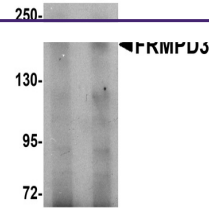
Clonality

Polyclonal

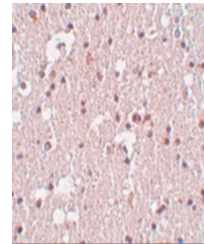
Uniprot ID
[Q5JV73](#)
NCBI
[Q5JV73](#)
Dilution Range

FRMPD3 antibody can be used for detection of FRMPD3 by Western blot at 1 - 2 µg/mL. Antibody can also be used for immunohistochemistry starting at 5 µg/mL. For immunofluorescence start at 20 µg/mL. Antibody validated: Western Blot in human samples; Immunohistochemistry in human samples

A B

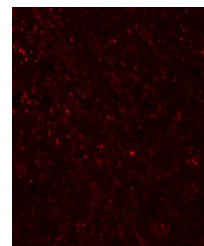


Western blot analysis of FRMPD3 in Jurka...



Immunohistochemistry of FRMPD3 in human

...



Immunofluorescence of FRMPD3 in rat brai...