

---

## Product Datasheet

### MLST8 Antibody (orb1239762)

**Description**

MLST8 Antibody

**Species/Host**

Rabbit

**Reactivity**

Human, Mouse, Rat

**Conjugation**

Unconjugated

**Tested**

ELISA, IF, IHC-P, WB

**Applications**
**Immunogen**

GbL antibody was raised against a 14 amino acid synthetic peptide from near the carboxy terminus of human GbL. The immunogen is located within the first 50 amino acids of GbL.

**Target**

MLST8

**Preservatives**

GBL Antibody is supplied in PBS containing 0.02% sodium azide.

**Form/Appearance**

Liquid

**Concentration**

1 mg/mL

**Storage**

GBL antibody can be stored at 4°C for three months and -20°C, stable for up to one year. As with all antibodies care should be taken to avoid repeated freeze thaw cycles. Antibodies should not be exposed to prolonged high temperatures.

**Note**

For research use only

**Application notes**

GbL antibody can be used for the detection of GbL by Western blot at 1 and 2 µg/mL. Antibody can also be used for immunohistochemistry starting at 10 µg/mL. For immunofluorescence start at 10 µg/mL. Antibody validated: Western Blot in human samples; Immunohistochemistry in mouse samples and Immunofluorescence in mouse samples. All other applications and species not yet tested.

**Isotype**

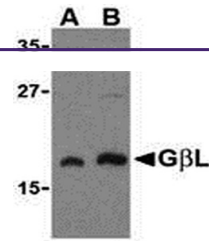
IgG

**Clonality**

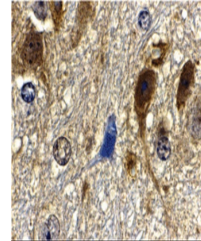
Polyclonal

**Uniprot ID**
[Q9BVC4](#)
**NCBI**
[AAH52292](#)
**Dilution Range**

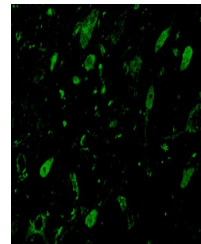
GbL antibody can be used for the detection of GbL by Western blot at 1 and 2 µg/mL. Antibody can also be used for immunohistochemistry starting at 10 µg/mL. For immunofluorescence start at 10 µg/mL. Antibody validated: Western Blot in human samples; Immunohistochemistry in mouse samples



Western blot analysis of GbL in human br...



Immunohistochemistry of GbL in mouse bra...



Immunofluorescence of GbL in Mouse Brain...