
Product Datasheet

CCDC88A Antibody (orb1239753)

Description

CCDC88A Antibody

Species/Host

Rabbit

Reactivity

Human, Mouse, Rat

Conjugation

Unconjugated

Tested Applications

ELISA, IF, WB

Immunogen

Girdin antibody was raised against a 16 amino acid synthetic peptide from near the carboxy terminus human Girdin. The immunogen is located within the last 50 amino acids of Girdin.

Target

CCDC88A

Preservatives

Girdin Antibody is supplied in PBS containing 0.02% sodium azide.

Form/Appearance

Liquid

Concentration

1 mg/mL

Storage

Girdin antibody can be stored at 4°C for three months and -20°C, stable for up to one year. As with all antibodies care should be taken to avoid repeated freeze thaw cycles. Antibodies should not be exposed to prolonged high temperatures.

Note

For research use only

Application notes

Girdin antibody can be used for detection of Girdin by Western blot at 1 - 2 µg/mL. For immunofluorescence start at 20 µg/mL. Antibody validated: Western Blot in rat samples and Immunofluorescence in human samples. All other applications and species not yet tested.

Isotype

IgG

Clonality

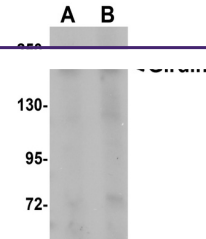
Polyclonal

Uniprot ID
[Q3V6T2](#)
NCBI
[NP_060554](#)
Dilution Range

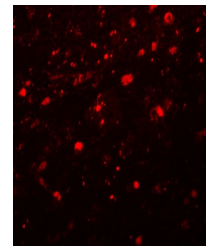
Girdin antibody can be used for detection of Girdin by Western blot at 1 - 2 µg/mL. For immunofluorescence start at 20 µg/mL. Antibody validated: Western Blot in rat samples and Immunofluorescence in human samples. All other applications and species not yet tested.

Expiration Date

12 months from date of receipt.



Western blot analysis of Girdin in rat brain tissue.



Immunofluorescence of Girdin in human brain tissue.