
Product Datasheet

GLE1 Antibody (orb1239750)

Description

GLE1 Antibody

Species/Host

Rabbit

Reactivity

Human, Mouse, Rat

Conjugation

Unconjugated

Tested Applications

ELISA, IF, IHC-P, WB

Immunogen

Gle1 antibody was raised against a 14 amino acid synthetic peptide near the center of human Gle1. The immunogen is located within amino acids 390 - 440 of Gle1.

Target

GLE1

Preservatives

Gle1 Antibody is supplied in PBS containing 0.02% sodium azide.

Form/Appearance

Liquid

Concentration

1 mg/mL

Storage

Gle1 antibody can be stored at 4°C for three months and -20°C, stable for up to one year. As with all antibodies care should be taken to avoid repeated freeze thaw cycles. Antibodies should not be exposed to prolonged high temperatures.

Note

For research use only

Application notes

Gle1 antibody can be used for detection of Gle1 by Western blot at 1 - 2 µg/mL. Antibody can also be used for immunohistochemistry starting at 2.5 µg/mL. For immunofluorescence start at 20 µg/mL. Antibody validated: Western Blot in human samples; Immunohistochemistry in mouse samples and Immunofluorescence in mouse samples. All other applications and species not yet tested.

Isotype

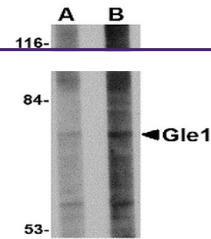
IgG

Clonality

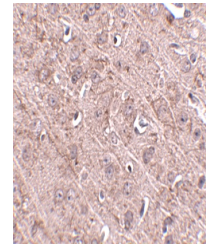
Polyclonal

Uniprot ID
[Q53GS7](#)
NCBI
[NP_001003722](#)
Dilution Range

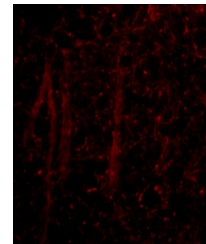
Gle1 antibody can be used for detection of Gle1 by Western blot at 1 - 2 µg/mL. Antibody can also be used for immunohistochemistry starting at 2.5 µg/mL. For immunofluorescence start at 20 µg/mL. Antibody validated: Western Blot in human samples; Immunohistochemistry in mouse samples



Western blot analysis of Gle1 in 293 cel...



Immunohistochemistry of Gle1 in mouse br...



Immunofluorescence of gle1 in mouse brai...