
Product Datasheet

GNPDA1 Antibody (orb1239744)

Description

GNPDA1 Antibody

Species/Host

Rabbit

Reactivity

Human, Mouse, Rat

Conjugation

Unconjugated

Tested

ELISA, ICC, IF, WB

Applications
Immunogen

GNPDA1 antibody was raised against an 18 amino acid synthetic peptide near the carboxy terminus of human GNPDA1. The immunogen is located within the last 50 amino acids of GNPDA1.

Target

GNPDA1

Preservatives

GNPDA1 Antibody is supplied in PBS containing 0.02% sodium azide.

Form/Appearance

Liquid

Concentration

1 mg/mL

Storage

GNPDA1 antibody can be stored at 4°C for three months and -20°C, stable for up to one year. As with all antibodies care should be taken to avoid repeated freeze thaw cycles. Antibodies should not be exposed to prolonged high temperatures.

Note

For research use only

Application notes

GNPDA1 antibody can be used for detection of GNPDA1 by Western blot at 1 - 2 µg/mL. Antibody can also be used for immunocytochemistry starting at 5 µg/mL. For immunofluorescence start at 20 µg/mL. Antibody validated: Western Blot in mouse samples; Immunocytochemistry in human samples and Immunofluorescence in human samples. All other applications and species not yet tested.

Isotype

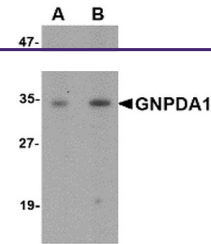
IgG

Clonality

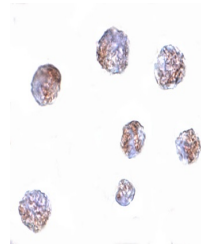
Polyclonal

Uniprot ID
[P46926](#)
NCBI
[AAC05123](#)
Dilution Range

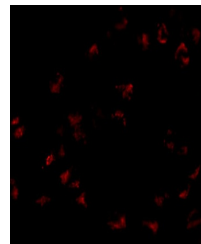
GNPDA1 antibody can be used for detection of GNPDA1 by Western blot at 1 - 2 µg/mL. Antibody can also be used for immunocytochemistry starting at 5 µg/mL. For immunofluorescence start at 20 µg/mL. Antibody validated: Western Blot in mouse samples; Immunocytochemistry in human samples



Western blot analysis of GNPDA1 in mouse...



Immunocytochemistry of GNPDA1 in 293 cel...



Immunofluorescence of GNPDA1 in 293 cell...