
Product Datasheet

GNPDA2 Antibody (orb1239743)

Description

GNPDA2 Antibody

Species/Host

Rabbit

Reactivity

Human, Mouse

Conjugation

Unconjugated

Tested Applications

ELISA, ICC, IF, WB

Immunogen

GNPDA2 antibody was raised against an 8 amino acid synthetic peptide near the carboxy terminus of human GNPDA2. The immunogen is located within the last 50 amino acids of GNPDA2.

Target

GNPDA2

Preservatives

GNPDA2 Antibody is supplied in PBS containing 0.02% sodium azide.

Form/Appearance

Liquid

Concentration

1 mg/mL

Storage

GNPDA2 antibody can be stored at 4°C for three months and -20°C, stable for up to one year. As with all antibodies care should be taken to avoid repeated freeze thaw cycles. Antibodies should not be exposed to prolonged high temperatures.

Note

For research use only

Application notes

GNPDA2 antibody can be used for detection of GNPDA2 by Western blot at 1 µg/mL. Antibody can also be used for immunocytochemistry starting at 4 µg/mL. For immunofluorescence start at 20 µg/mL. Antibody validated: Western Blot in human samples; Immunocytochemistry in human samples and Immunofluorescence in mouse samples. All other applications and species not yet tested.

Isotype

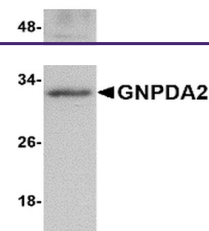
IgG

Clonality

Polyclonal

Uniprot ID
[Q8TDQ7](#)
NCBI
[NP_612208](#)
Dilution Range

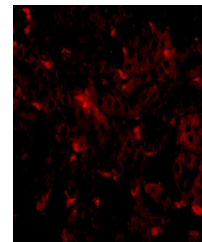
GNPDA2 antibody can be used for detection of GNPDA2 by Western blot at 1 µg/mL. Antibody can also be used for immunocytochemistry starting at 4 µg/mL. For immunofluorescence start at 20 µg/mL. Antibody validated: Western Blot in human samples; Immunocytochemistry in human samples



Western blot analysis of GNPDA2 in human...



Immunocytochemistry of GNPDA2 in 293 cel...



Immunofluorescence of GNPDA2 in mouse ki...