
Product Datasheet

GPR15 Antibody (orb1239737)

Description

GPR15 Antibody

Species/Host

Rabbit

Reactivity

Human, Mouse, Rat

Conjugation

Unconjugated

Tested

ELISA, ICC, WB

Applications
Immunogen

GPR15 antibody was raised against a peptide corresponding to 16 amino acids near the amino terminus of human GPR15. The immunogen is located within the first 50 amino acids of GPR15.

Target

GPR15

Preservatives

GPR15 Antibody is supplied in PBS containing 0.02% sodium azide.

Form/Appearance

Liquid

Concentration

1 mg/mL

Storage

GPR15 antibody can be stored at 4°C for three months and -20°C, stable for up to one year. As with all antibodies care should be taken to avoid repeated freeze thaw cycles. Antibodies should not be exposed to prolonged high temperatures.

Note

For research use only

Application notes

GPR15 antibody can be used for detection of GPR15 by Western blot at 0.5 - 1 µg/mL. Antibody can also be used for immunocytochemistry starting at 5 µg/mL. Antibody validated: Western Blot in human samples and Immunocytochemistry in human samples. All other applications and species not yet tested.

Isotype

IgG

Clonality

Polyclonal

MW

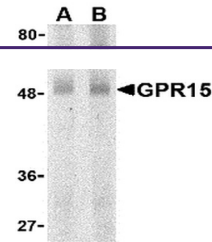
Predicted: 40 kDa Observed: 49 kDa

Uniprot ID

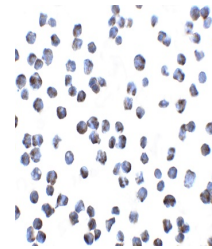
U34806

NCBI
[U34806](https://www.ncbi.nlm.nih.gov/protein/U34806)
Dilution Range

GPR15 antibody can be used for detection of GPR15 by Western blot at 0.5 - 1 µg/mL. Antibody can also be used for immunocytochemistry starting at 5 µg/mL. Antibody validated: Western Blot in human samples and Immunocytochemistry in human samples. All other applications and species not yet tested.



Western blot analysis of GPR15 in human ...



Immunocytochemistry of GPR15 in A431 cel...