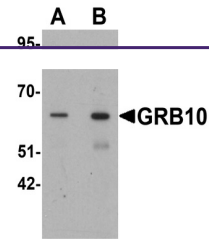
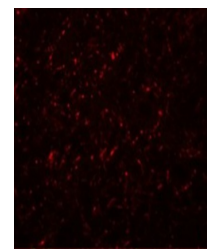

Product Datasheet

GRB10 Antibody (orb1239733)

Description	GRB10 Antibody
Species/Host	Rabbit
Reactivity	Human, Mouse, Rat
Conjugation	Unconjugated
Tested Applications	ELISA, IF, WB
Immunogen	GRB10 antibody was raised against a 17 amino acid synthetic peptide near the carboxy terminus of human GRB10. The immunogen is located within amino acids 440 - 490 of GRB10.
Target	GRB10
Preservatives	GRB10 Antibody is supplied in PBS containing 0.02% sodium azide.
Form/Appearance	Liquid
Concentration	1 mg/mL
Storage	GRB10 antibody can be stored at 4°C for three months and -20°C, stable for up to one year. As with all antibodies care should be taken to avoid repeated freeze thaw cycles. Antibodies should not be exposed to prolonged high temperatures.
Note	For research use only
Application notes	GRB10 antibody can be used for detection of GRB10 by Western blot at 1 - 2 µg/mL. Antibody can also be used for immunofluorescence starting at 20 µg/mL. For immunofluorescence start at 20 µg/mL. Antibody validated: Western Blot in human samples and Immunofluorescence in rat samples. All other applications and species not yet tested.
Isotype	IgG
Clonality	Polyclonal
Uniprot ID	Q13322
NCBI	NP_005302
Dilution Range	GRB10 antibody can be used for detection of GRB10 by Western blot at 1 - 2 µg/mL. Antibody can also be used for immunofluorescence starting at 20 µg/mL. For immunofluorescence start at 20 µg/mL. Antibody validated: Western Blot in human samples and Immunofluorescence in rat samples. All other applications and species not yet tested.



Western blot analysis of GRB10 in SK-N-S...



Immunofluorescence of GRB10 in rat brain...