
Product Datasheet

PDCD1 Antibody (orb1239732)

Description

PDCD1 Antibody

Species/Host

Rabbit

Reactivity

Human, Mouse, Rat

Conjugation

Unconjugated

Tested Applications

ELISA, IF, IHC-P, WB

Immunogen

Anti-PD-1 antibody (orb1239732) was raised against a peptide corresponding to 16 amino acids near the carboxy terminus of human PD-1. The immunogen is located within amino acids 210-260 of PD-1.

Target

PDCD1

Preservatives

PD-1 Antibody is supplied in PBS containing 0.02% sodium azide.

Form/Appearance

Liquid

Concentration

1 mg/mL

Storage

PD-1 antibody can be stored at 4°C for three months and -20°C, stable for up to one year. As with all antibodies care should be taken to avoid repeated freeze thaw cycles. Antibodies should not be exposed to prolonged high temperatures.

Note

For research use only

Isotype

IgG

Clonality

Polyclonal

MW

Human PD-1 has 1 isoform (288aa, 32kD). Mouse PD-1 has 1 isoform 288aa, 32kD) and Rat PD-1 also has one isoform (287aa, 32kD).

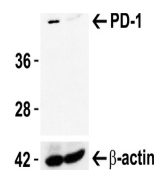
Uniprot ID
[Q15116](#)
NCBI
[Q15116](#)
Dilution Range

WB: 1-4 µg/mL; IHC: 2.5-5 µg/mL; IF: 20 µg/mL. Antibody validated: Western Blot in human, mouse and rat samples; Immunohistochemistry in human samples; Immunofluorescence in human samples. All other applications and species not yet tested.

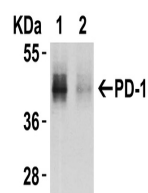
Expiration Date

12 months from date of receipt.

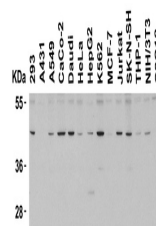
KDa 1 2



KO Validation in HeLa Cells. Loading: 10...



KD Validation in HeLa Cells. Loading: 10...



Western Blot Validation in Human and Mou...