
Product Datasheet

GRIK1 Antibody (orb1239731)

Description

GRIK1 Antibody

Species/Host

Rabbit

Reactivity

Human, Mouse, Rat

Conjugation

Unconjugated

Tested Applications

ELISA, IF, IHC-P, WB

Immunogen

Grik1 antibody was raised against a 16 amino acid synthetic peptide near the center of the human Grik1. The immunogen is located within amino acids 380 - 430 of Grik1.

Target

GRIK1

Preservatives

Grik1 Antibody is supplied in PBS containing 0.02% sodium azide.

Form/Appearance

Liquid

Concentration

1 mg/mL

Storage

Grik1 antibody can be stored at 4°C for three months and -20°C, stable for up to one year. As with all antibodies care should be taken to avoid repeated freeze thaw cycles. Antibodies should not be exposed to prolonged high temperatures.

Note

For research use only

Application notes

Grik1 antibody can be used for detection of Grik1 by Western blot at 0.5 - 1 µg/mL. Antibody can also be used for immunohistochemistry starting at 2.5 µg/mL. For immunofluorescence start at 20 µg/mL. Antibody validated: Western Blot in rat samples; Immunohistochemistry in human samples and Immunofluorescence in human samples. All other applications and species not yet tested.

Isotype

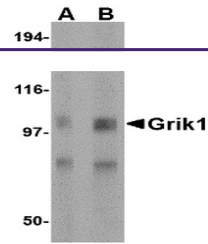
IgG

Clonality

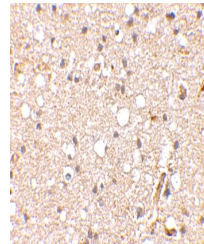
Polyclonal

Uniprot ID
P39086
NCBI
P39086
Dilution Range

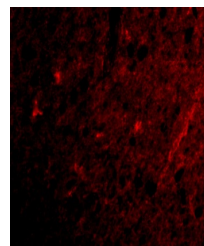
Grik1 antibody can be used for detection of Grik1 by Western blot at 0.5 - 1 µg/mL. Antibody can also be used for immunohistochemistry starting at 2.5 µg/mL. For immunofluorescence start at 20 µg/mL. Antibody validated: Western Blot in rat samples; Immunohistochemistry in human samples and



Western blot analysis of Grik1 in rat br...



Immunohistochemical staining of human br...



Immunofluorescence of Grik1 in Human Bra...