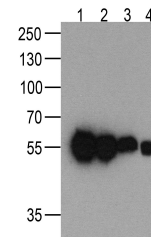


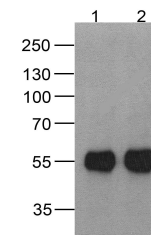
Product Datasheet

HAT-tag Antibody [4A6F3] (orb1239720)

Description	HAT-tag Antibody [4A6F3]
Species/Host	Mouse
Reactivity	Tag
Conjugation	Unconjugated
Tested Applications	ELISA, IP, WB
Immunogen	HAT-tag antibody was raised against a synthetic peptide containing KDHLIHNVHKEFHAAHANK.
Preservatives	HAT-tag antibody is supplied in PBS containing 0.02% sodium azide.
Form/Appearance	Liquid
Concentration	1 mg/mL
Storage	Store at 4°C for up to one year. Do not expose to prolonged high temperatures
Note	For research use only
Application notes	HAT-tag antibody can be used for detection of HAT-tag epitope-containing recombinant proteins by Western blot at 0.5 - 1 µ/ml.
Isotype	IgG
Clonality	Monoclonal
Dilution Range	HAT-tag antibody can be used for detection of HAT-tag epitope-containing recombinant proteins by Western blot at 0.5 - 1 µ/ml.
Expiration Date	12 months from date of receipt.



Western blot analysis of
(1) 200ng,
(2) ...



Western blot analysis of
(1) 20 ng of
HA...