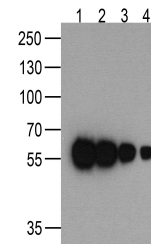


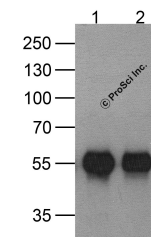
## Product Datasheet

### HAT-tag Antibody [9A2F8] (orb1239719)

|                            |  |
|----------------------------|--|
| <b>Description</b>         | HAT-tag Antibody [9A2F8]   |
| <b>Species/Host</b>        | Mouse  |
| <b>Reactivity</b>          | Tag  |
| <b>Conjugation</b>         | Unconjugated   |
| <b>Tested Applications</b> | ELISA, IP, WB  |
| <b>Immunogen</b>           | HAT-tag antibody was raised against a synthetic peptide containing KDHLIHNVHKEFHAAHANK.  |
| <b>Preservatives</b>       | HAT-tag antibody is supplied in PBS containing 0.02% sodium azide.   |
| <b>Form/Appearance</b>     | Liquid   |
| <b>Concentration</b>       | 1 mg/mL  |
| <b>Storage</b>             | HAT-tag antibody can be stored at 4°C up to one year. Antibodies should not be exposed to prolonged high temperatures.         |
| <b>Note</b>                | For research use only  |
| <b>Application notes</b>   | HAT-tag antibody can be used for detection of HAT-tag epitope-containing recombinant proteins by Western blot at 0.5 - 1 µ/ml. |
| <b>Isotype</b>             | IgG  |
| <b>Clonality</b>           | Monoclonal   |
| <b>Dilution Range</b>      | HAT-tag antibody can be used for detection of HAT-tag epitope-containing recombinant proteins by Western blot at 0.5 - 1 µ/ml. |
| <b>Expiration Date</b>     | 12 months from date of receipt.  |



Western blot analysis of  
(1) 200ng,  
(2) ...



Western blot analysis of  
(1) 20 ng of HA...  
HA...