

---

## Product Datasheet

### HDGFRP2 Antibody (orb1239716)

**Description**

HDGFRP2 Antibody

**Species/Host**

Rabbit

**Reactivity**

Human, Mouse, Rat

**Conjugation**

Unconjugated

**Tested Applications**

ELISA, IF, IHC-P, WB

**Immunogen**

HDGFRP2 antibody was raised against an 18 amino acid synthetic peptide near the amino terminus of human HDGFRP2. The immunogen is located within amino acids 50 - 100 of HDGFRP2.

**Target**

HDGFRP2

**Preservatives**

HDGFRP2 Antibody is supplied in PBS containing 0.02% sodium azide.

**Form/Appearance**

Liquid

**Concentration**

1 mg/mL

**Storage**

HDGFRP2 antibody can be stored at 4°C for three months and -20°C, stable for up to one year. As with all antibodies care should be taken to avoid repeated freeze thaw cycles. Antibodies should not be exposed to prolonged high temperatures.

**Note**

For research use only

**Application notes**

HDGFRP2 antibody can be used for detection of HDGFRP2 by Western blot at 0.5 - 1 µg/mL. Antibody can also be used for immunohistochemistry starting at 5 µg/mL. For immunofluorescence start at 20 µg/mL. Antibody validated: Western Blot in rat samples; Immunohistochemistry in rat samples and Immunofluorescence in rat samples. All other applications and species not yet tested.

**Isotype**

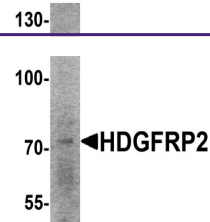
IgG

**Clonality**

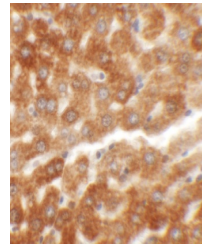
Polyclonal

**Uniprot ID**
[Q7Z4V5](#)
**NCBI**
[EAW69215](#)
**Dilution Range**

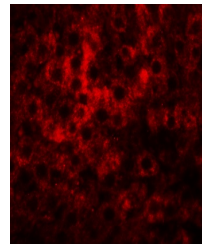
HDGFRP2 antibody can be used for detection of HDGFRP2 by Western blot at 0.5 - 1 µg/mL. Antibody can also be used for immunohistochemistry starting at 5 µg/mL. For immunofluorescence start at 20 µg/mL. Antibody



Western blot analysis of HDGFRP2 in rat ...



Immunohistochemistry of HDGFRP2 in rat liv...



Immunofluorescence of HDGFRP2 in rat liv...