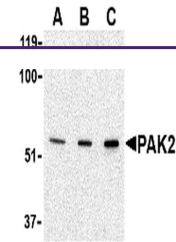
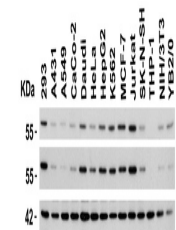

Product Datasheet

PAK2 Antibody (orb1239715)

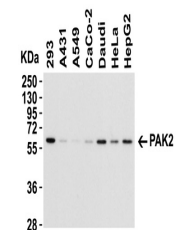
Description	PAK2 Antibody
Species/Host	Rabbit
Reactivity	Human, Mouse, Rat
Conjugation	Unconjugated
Tested Applications	ELISA, IF, IHC-P, WB
Immunogen	Anti-PAK2 antibody (orb1239715) was raised against a peptide corresponding to 14 amino acids near the amino terminus of human PAK2. The immunogen is located within amino acids 20-70 of PAK2.
Target	PAK2
Preservatives	PAK2 Antibody is supplied in PBS containing 0.02% sodium azide.
Form/Appearance	Liquid
Concentration	1 mg/mL
Storage	PAK2 antibody can be stored at 4°C for three months and -20°C, stable for up to one year. As with all antibodies care should be taken to avoid repeated freeze thaw cycles. Antibodies should not be exposed to prolonged high temperatures.
Note	For research use only
Isotype	IgG
Clonality	Polyclonal
MW	Predicted: 58kD Observed: 58 kD
Uniprot ID	Q13177
NCBI	NP_002568
Dilution Range	WB: 0.5-2 µg/mL; IHC: 10 µg/mL; IF: 20 µg/mL. Antibody validated: Western Blot in human, mouse and rat samples; Immunohistochemistry and Immunofluorescence in mouse samples. All other applications and species not yet tested.
Expiration Date	12 months from date of receipt.



Western Blot Validation in Jurkat Lysate...



Independent Antibody Validation (IAV) vi...



Western Blot Validation in Human Cell Li...