

---

## Product Datasheet

### ORAI1 Antibody (orb1239704)

**Description**

ORAI1 Antibody

**Species/Host**

Mouse

**Reactivity**

Human, Mouse, Rat

**Conjugation**

Unconjugated

**Tested Applications**

ELISA, IF, IHC-P, WB

**Immunogen**

Mouse monoclonal ORAI1 antibody was raised against a 16 amino acid synthetic peptide from near the carboxy terminus of human ORAI1.

**Target**

ORAI1

**Preservatives**

ORAI1 Monoclonal Antibody is supplied in PBS containing 0.02% sodium azide.

**Form/Appearance**

Liquid

**Concentration**

1 mg/mL

**Storage**

ORAI1 monoclonal antibody can be stored at -20°C, stable for one year.

**Note**

For research use only

**Application notes**

ORAI1 antibody can be used for detection of ORAI1 by Western blot at 1 - 2 µg/mL. Antibody can also be used for immunohistochemistry starting at 2.5 µg/mL. For immunofluorescence start at 20 µg/mL. Antibody validated: Western Blot in human samples; Immunohistochemistry in human samples and Immunofluorescence in human samples. All other applications and species not yet tested.

**Isotype**

IgG1

**Clonality**

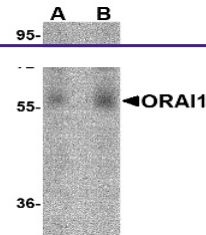
Monoclonal

**MW**

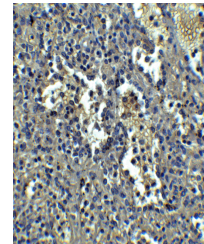
Predicted: 33 kDa Observed: 56 kDa

**Uniprot ID**
[Q96D31](#)
**NCBI**
[Q96D31](#)
**Dilution Range**

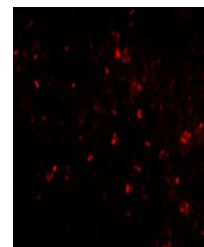
ORAI1 antibody can be used for detection of ORAI1 by Western blot at 1 - 2 µg/mL. Antibody can also be used for immunohistochemistry starting at 2.5 µg/mL. For immunofluorescence start at 20 µg/mL. Antibody validated: Western Blot in human samples; Immunohistochemistry in human samples and Immunofluorescence in human samples. All other applications and species not yet tested.



Western blot analysis of ORAI1 in human ...



Immunohistochemistry of ORAI1 in human s...



Immunofluorescence of ORAI1 in human spl...