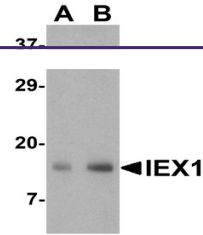
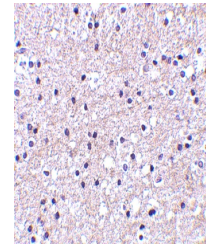

Product Datasheet

IER3 Antibody (orb1239697)

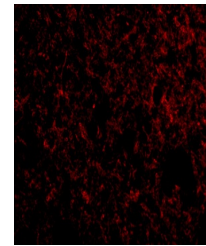
Description	IER3 Antibody
Species/Host	Rabbit
Reactivity	Human, Mouse
Conjugation	Unconjugated
Tested Applications	ELISA, IF, IHC-P, WB
Immunogen	IER3 antibody was raised against a 24 amino acid synthetic peptide near the center of human IEX1. The immunogen is located within amino acids 40 - 90 of IEX-1.
Target	IER3
Preservatives	IER-1 Antibody is supplied in PBS containing 0.02% sodium azide.
Form/Appearance	Liquid
Concentration	1 mg/mL
Storage	IER-1 antibody can be stored at 4°C for three months and -20°C, stable for up to one year. As with all antibodies care should be taken to avoid repeated freeze thaw cycles. Antibodies should not be exposed to prolonged high temperatures.
Note	For research use only
Application notes	IER3 antibody can be used for detection of IEX1 by Western blot at 1 - 2 µg/mL. Antibody can also be used for immunohistochemistry starting at 2.5 µg/mL. For immunofluorescence start at 20 µg/mL. Antibody validated: Western Blot in mouse samples; Immunohistochemistry in human samples and Immunofluorescence in human samples. All other applications and species not yet tested.
Isotype	IgG
Clonality	Polyclonal
MW	Predicted: 17 kDa Observed: 17 kDa
Uniprot ID	P46695
NCBI	P46695
Dilution Range	IER3 antibody can be used for detection of IEX1 by Western blot at 1 - 2 µg/mL. Antibody can also be used for immunohistochemistry starting at 2.5 µg/mL. For immunofluorescence start at 20 µg/mL. Antibody validated: Western Blot in mouse samples;



Western blot analysis of IEX-1 in mouse ...



Immunohistochemistry of IEX-1 in human l...



Immunofluorescence of IEX-1 in Human Bra...