

---

## Product Datasheet

### IFITM1 Antibody (orb1239694)

**Description**

IFITM1 Antibody

**Species/Host**

Rabbit

**Reactivity**

Human, Mouse, Rat

**Conjugation**

Unconjugated

**Tested Applications**

ELISA, ICC, IF, WB

**Immunogen**

IFITM1 antibody was raised against a 16 amino acid synthetic peptide near the center of human IFITM1. The immunogen is located within amino acids 40 - 90 of IFITM1.

**Target**

IFITM1

**Preservatives**

IFITM1 Antibody is supplied in PBS containing 0.02% sodium azide.

**Form/Appearance**

Liquid

**Concentration**

1 mg/mL

**Storage**

IFITM1 antibody can be stored at 4°C for three months and -20°C, stable for up to one year. As with all antibodies care should be taken to avoid repeated freeze thaw cycles. Antibodies should not be exposed to prolonged high temperatures.

**Note**

For research use only

**Application notes**

IFITM1 antibody can be used for detection of IFITM1 by Western blot at 1 - 2 µg/mL. Antibody can also be used for immunocytochemistry starting at 20 µg/mL. For immunofluorescence start at 20 µg/mL. Antibody validated: Western Blot in mouse samples; Immunocytochemistry in human samples and Immunofluorescence in human samples. All other applications and species not yet tested.

**Isotype**

IgG

**Clonality**

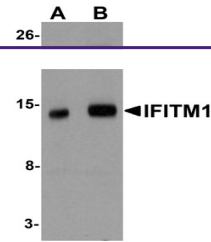
Polyclonal

**MW**

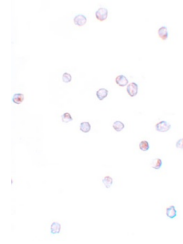
Predicted: 14 kDa Observed: 14 kDa

**Uniprot ID**
[P13164](#)
**NCBI**
[NP\\_003632](#)
**Dilution Range**

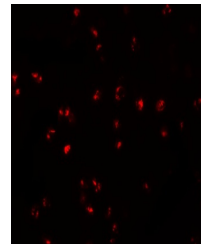
IFITM1 antibody can be used for detection of IFITM1 by Western blot at 1 - 2 µg/mL. Antibody can also be used for immunocytochemistry starting at 20 µg/mL. For immunofluorescence start at 20 µg/mL. Antibody validated: Western Blot in mouse samples;



Western blot analysis of IFITM1 in 3T3 c...



Immunocytochemistry of IFITM1 in Jurkat ...



Immunofluorescence of IFITM1 in Jurkat c...