
Product Datasheet

IKBKAP Antibody (orb1239691)

Description

IKBKAP Antibody

Species/Host

Rabbit

Reactivity

Human, Mouse

Conjugation

Unconjugated

Tested Applications

ELISA, ICC, IF, WB

Immunogen

IKAP antibody was raised against a 16 amino acid synthetic peptide from near the carboxy terminus of human IKAP. The immunogen is located within the last 50 amino acids of IKAP.

Target

IKBKAP

Preservatives

IKAP Antibody is supplied in PBS containing 0.02% sodium azide.

Form/Appearance

Liquid

Concentration

1 mg/mL

Storage

IKAP antibody can be stored at 4°C for three months and -20°C, stable for up to one year. As with all antibodies care should be taken to avoid repeated freeze thaw cycles. Antibodies should not be exposed to prolonged high temperatures.

Note

For research use only

Application notes

IKAP antibody can be used for detection of IKAP by Western blot at 0.5 to 1 µg/mL. Antibody can also be used for immunocytochemistry starting at 1 µg/mL. For immunofluorescence start at 20 µg/mL. Antibody validated: Western Blot in mouse samples; Immunocytochemistry in mouse samples and Immunofluorescence in mouse samples. All other applications and species not yet tested.

Isotype

IgG

Clonality

Polyclonal

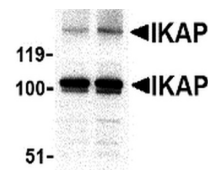
MW

Predicted: 134, 147 kDa Observed: 105, 145 kDa

Uniprot ID
[O95163](#)
NCBI
[AAC64258](#)
Dilution Range

IKAP antibody can be used for detection of IKAP by Western blot at 0.5 to 1 µg/mL. Antibody can also be used for immunocytochemistry starting at 1 µg/mL. For immunofluorescence start at 20 µg/mL. Antibody validated: Western Blot in mouse samples;

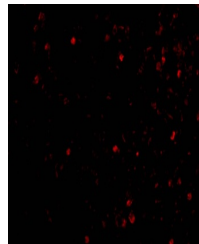
A B



Western blot analysis of IKAP in A-20 ce...



Immunocytochemistry of IKAP in A-20 cell...



Immunofluorescence of IKAP in A20 cells ...