

---

## Product Datasheet

### IL16 Antibody (orb1239679)

**Description**

IL16 Antibody

**Species/Host**

Rabbit

**Reactivity**

Human, Mouse, Rat

**Conjugation**

Unconjugated

**Tested Applications**

ELISA, IF, IHC-P, WB

**Immunogen**

IL-16 antibody was raised against a 14 amino acid synthetic peptide near the amino terminus of human IL-16. The immunogen is located within amino acids 140 - 190 of IL-16.

**Target**

IL16

**Preservatives**

IL-16 Antibody is supplied in PBS containing 0.02% sodium azide.

**Form/Appearance**

Liquid

**Concentration**

1 mg/mL

**Storage**

IL-16 antibody can be stored at 4°C for three months and -20°C, stable for up to one year. As with all antibodies care should be taken to avoid repeated freeze thaw cycles. Antibodies should not be exposed to prolonged high temperatures.

**Note**

For research use only

**Application notes**

IL-16 antibody can be used for detection of IL-16 by Western blot at 2.5 - 5 µg/mL. Antibody can also be used for immunohistochemistry starting at 2.5 µg/mL. For immunofluorescence start at 20 µg/mL. Antibody validated: Western Blot in rat samples; Immunohistochemistry in mouse samples and Immunofluorescence in mouse samples. All other applications and species not yet tested.

**Isotype**

IgG

**Clonality**

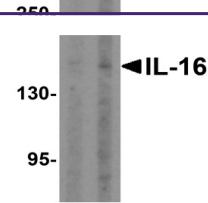
Polyclonal

**MW**

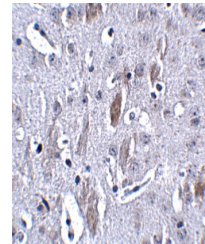
Predicted: 145 kDa Observed: 160 kDa

**Uniprot ID**
[Q14005](#)
**NCBI**
[AAQ86961](#)
**Dilution Range**

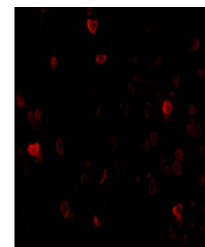
IL-16 antibody can be used for detection of IL-16 by Western blot at 2.5 - 5 µg/mL. Antibody can also be used for immunohistochemistry starting at 2.5 µg/mL. For immunofluorescence start at 20 µg/mL. Antibody validated: Western Blot in rat samples;

**A B**


Western blot analysis of IL-16 in rat br...



Immunohistochemistry of IL-16 in mouse b...



Immunofluorescence of IL-16 in mouse bra...