
Product Datasheet

OLIG2 Antibody (orb1239677)

Description

OLIG2 Antibody

Species/Host

Rabbit

Reactivity

Human, Mouse, Rat

Conjugation

Unconjugated

Tested Applications

ELISA, IF, IHC-P, WB

Immunogen

OLIG2 antibody was raised against a 15 amino acid peptide near the amino terminus of human OLIG2. The immunogen is located within amino acids 80 - 130 of OLIG2.

Target

OLIG2

Preservatives

OLIG2 Antibody is supplied in PBS containing 0.02% sodium azide.

Form/Appearance

Liquid

Concentration

1 mg/mL

Storage

OLIG2 antibody can be stored at 4°C for three months and -20°C, stable for up to one year.

Note

For research use only

Application notes

OLIG2 antibody can be used for detection of OLIG2 by Western blot at 1 - 2 µg/ml. Antibody can also be used for Immunohistochemistry at 5 µg/mL. For Immunofluorescence start at 20 µg/mL. Antibody validated: Western Blot in mouse samples; Immunohistochemistry in mouse and rat samples and Immunofluorescence in mouse and rat samples. All other applications and species not yet tested.

Isotype

IgG

Clonality

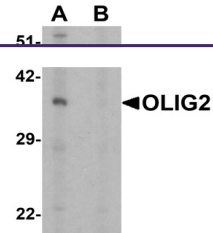
Polyclonal

MW

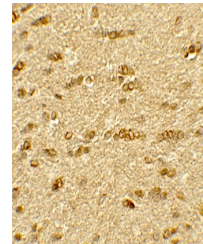
Predicted: 36 kDa Observed: 37 kDa

Uniprot ID
[Q13516](#)
NCBI
[NP_005797](#)
Dilution Range

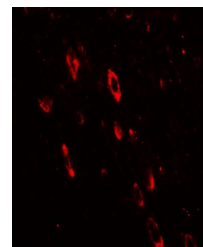
OLIG2 antibody can be used for detection of OLIG2 by Western blot at 1 - 2 µg/ml. Antibody can also be used for Immunohistochemistry at 5 µg/mL. For Immunofluorescence start at 20 µg/mL. Antibody validated: Western Blot in mouse samples; Immunohistochemistry in mouse and rat samples and Immunofluorescence in mouse and rat samples. All other applications and species not yet tested.



Western blot analysis of OLIG2 in EL4 ce...



Immunohistochemistry of OLIG2 in rat bra...



Immunofluorescence of OLIG2 in rat brain...