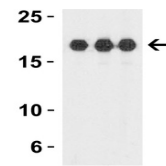

Product Datasheet

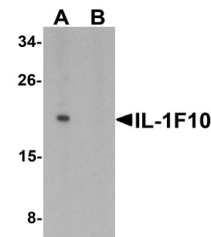
IL1F10 Antibody (orb1239675)

Description	IL1F10 Antibody
Species/Host	Rabbit
Reactivity	Human
Conjugation	Unconjugated
Tested Applications	ELISA, IHC-P, WB
Immunogen	Anti-IL-1F10 antibody (orb1239675) was raised against a peptide corresponding to 17 amino acids near the carboxy terminus of human IL-1F10. The immunogen is located within the last 50 amino acids of IL-1F10.
Target	IL1F10
Preservatives	IL-1F10 antibody is supplied in PBS containing 0.02% sodium azide.
Form/Appearance	Liquid
Concentration	1 mg/mL
Storage	IL-1F10 antibody can be stored at 4°C for three months and -20°C, stable for up to one year.
Note	For research use only
Isotype	IgG
Clonality	Polyclonal
MW	Predicted: 17kD Observed: 17 kD
Uniprot ID	Q8WWZ1
NCBI	NP_775184
Dilution Range	WB: 1 µg/mL; IHC: 5 µg/mL. Antibody validated: Western Blot in human samples; Immunohistochemistry in human samples. All other applications and species not yet tested.
Expiration Date	12 months from date of receipt.

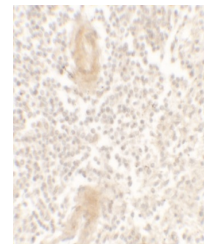
KDa 1 2 3



Western Blot Validation with Recombinant...



Western Blot Validation in Human Liver T...



Immunohistochemistry Validation of IL-1F...