

---

## Product Datasheet

### IL1RL2 Antibody (orb1239672)

**Description**

IL1RL2 Antibody

**Species/Host**

Rabbit

**Reactivity**

Human, Mouse, Rat

**Conjugation**

Unconjugated

**Tested Applications**

ELISA, IF, IHC-P, WB

**Immunogen**

IL-1RL2 antibody was raised against a 16 amino acid peptide near the center of human IL-1RL2. The immunogen is located within amino acids 260 - 310 of IL-1RL2.

**Target**

IL1RL2

**Preservatives**

IL-1RL2 antibody is supplied in PBS containing 0.02% sodium azide.

**Form/Appearance**

Liquid

**Concentration**

1 mg/mL

**Storage**

IL-1RL2 antibody can be stored at 4°C up to one year. Antibodies should not be exposed to prolonged high temperatures.

**Note**

For research use only

**Application notes**

IL-1RL2 antibody can be used for detection of IL-1RL2 by Western blot at 1 - 2 µg/ml. Antibody validated: Western Blot in human samples; Immunohistochemistry in human samples and Immunofluorescence in human samples. All other applications and species not yet tested.

**Isotype**

IgG

**Clonality**

Polyclonal

**MW**

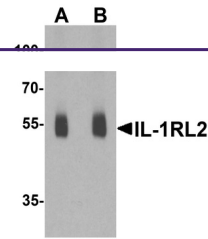
Predicted: 61 kDa Observed: 55 kDa

**Uniprot ID**
[Q9HB29](#)
**NCBI**
[NP\\_003845](#)
**Dilution Range**

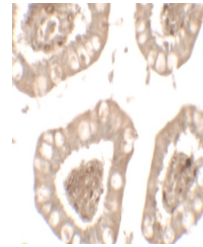
IL-1RL2 antibody can be used for detection of IL-1RL2 by Western blot at 1 - 2 µg/ml. Antibody validated: Western Blot in human samples; Immunohistochemistry in human samples and Immunofluorescence in human samples. All other applications and species not yet tested.

**Expiration Date**

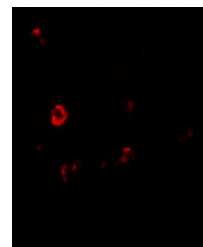
12 months from date of receipt.



Western blot analysis of IL-1RL2 in huma...



Immunohistochemistry of IL-1RL2 in human...



Immunofluorescence of IL-1RL2 in human S...