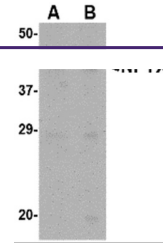
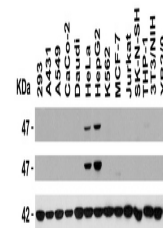

Product Datasheet

NPTX2 Antibody (orb1239671)

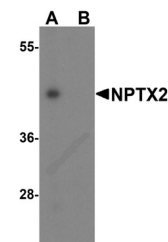
Description	NPTX2 Antibody
Species/Host	Rabbit
Reactivity	Human, Mouse, Rat
Conjugation	Unconjugated
Tested Applications	ELISA, IF, IHC-P, WB
Immunogen	Anti-NPTX2 antibody (orb1239671) was raised against a peptide corresponding to 16 amino acids near the center of human NPTX2. The immunogen is located within amino acids 170 - 220 of NPTX2.
Target	NPTX2
Preservatives	NPTX2 Antibody is supplied in PBS containing 0.02% sodium azide.
Form/Appearance	Liquid
Concentration	1 mg/mL
Storage	NPTX2 antibody can be stored at 4°C up to one year. Antibodies should not be exposed to prolonged high temperatures.
Note	For research use only
Isotype	IgG
Clonality	Polyclonal
MW	Predicted: 47kD Observed: 47 kD
Uniprot ID	P47972
NCBI	NP_002514
Dilution Range	WB: 0.5-4 µg/mL; IHC: 5 µg/mL; IF: 20 µg/mL. Antibody validated: Western Blot in human, mouse and rat samples; Immunohistochemistry in human and mouse samples; Immunofluorescence in human and mouse samples. All other applications and species not yet tested.
Expiration Date	12 months from date of receipt.



Western Blot Validation in Mouse Brain T...



Independent Antibody Validation (IAV) vi...



Western Blot Validation in Mouse Brain T...