
Product Datasheet

IL22 Antibody (orb1239668)

Description

IL22 Antibody

Species/Host

Rabbit

Reactivity

Human, Mouse, Rat

Conjugation

Unconjugated

Tested Applications

ELISA, ICC, IF, WB

Immunogen

IL-22 antibody was raised against a 17 amino acid peptide near the center of human IL-22. The immunogen is located within amino acids 90 - 140 of IL-22.

Target

IL22

Preservatives

IL-22 antibody is supplied in PBS containing 0.02% sodium azide.

Form/Appearance

Liquid

Concentration

1 mg/mL

Storage

IL-22 antibody can be stored at 4°C for three months and -20°C, stable for up to one year.

Note

For research use only

Application notes

IL-22 antibody can be used for detection of IL-22 by Western blot at 0.5 µg/ml. Antibody can also be used for Immunocytochemistry starting at 5 µg/mL. For immunofluorescence start at 20 µg/mL. Antibody validated: Western Blot in human samples; Immunocytochemistry in human samples and Immunofluorescence in human samples. All other applications and species not yet tested.

Isotype

IgG

Clonality

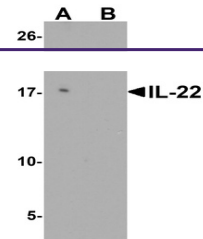
Polyclonal

MW

Predicted: 20 kDa Observed: 17 kDa

Uniprot ID
[Q9GZX6](#)
NCBI
[NP_065386](#)
Dilution Range

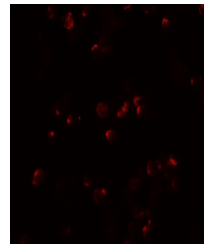
IL-22 antibody can be used for detection of IL-22 by Western blot at 0.5 µg/ml. Antibody can also be used for Immunocytochemistry starting at 5 µg/mL. For immunofluorescence start at 20 µg/mL. Antibody validated: Western Blot in human samples; Immunocytochemistry in human samples and Immunofluorescence in human samples. All other applications and species not yet tested.



Western blot analysis of IL-22 in HeLa c...



Immunocytochemistry of IL-22 in HeLa cel...



Immunofluorescence of IL-22 in HeLa cell...