

---

## Product Datasheet

### NPHS1 Antibody (orb1239658)

**Description**

NPHS1 Antibody

**Species/Host**

Rabbit

**Reactivity**

Human, Mouse

**Conjugation**

Unconjugated

**Tested Applications**

ELISA, IF, IHC-P, WB

**Immunogen**

Anti-Nephrin antibody (orb1239658) was raised against a peptide corresponding to 15 amino acids near the center of human Nephrin. The immunogen is located within amino acids 1100-1150 of Nephrin.

**Target**

NPHS1

**Preservatives**

Nephrin antibody is supplied in PBS containing 0.02% sodium azide.

**Form/Appearance**

Liquid

**Concentration**

1 mg/mL

**Storage**

Nephrin antibody can be stored at 4°C for three months and -20°C, stable for up to one year.

**Note**

For research use only

**Isotype**

IgG

**Clonality**

Polyclonal

**MW**

Predicted: 125, 137 kDa Observed: 125 kDa

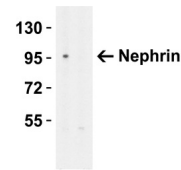
**Uniprot ID**
[O60500](#)
**NCBI**
[NP\\_004637](#)
**Dilution Range**

WB: 1-2 µg/mL; IHC: 5 µg/mL; IF: 20 µg/mL. Antibody validated: Western Blot in human and mouse samples; Immunohistochemistry in human samples; Immunofluorescence in human samples. All other applications and species not yet tested.

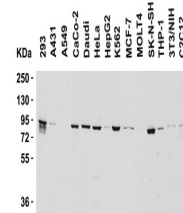
**Expiration Date**

12 months from date of receipt.

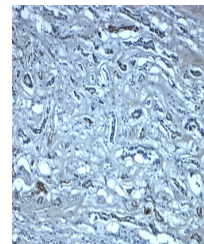
KDa 1 2



Western Blot Validation in HeLa Cell Lys...



Western Blot Validation in Human and Mou...



Immunohistochemistry Validation of Nephr...