

---

## Product Datasheet

### IL36G Antibody (orb1239650)

**Description**

IL36G Antibody

**Species/Host**

Rabbit

**Reactivity**

Human

**Conjugation**

Unconjugated

**Tested Applications**

ELISA, IF, IHC-P, WB

**Immunogen**

IL-36G antibody was raised against a 13 amino acid peptide near the carboxy terminus of human IL-36G. The immunogen is located within the last 50 amino acids of IL-36G.

**Target**

IL36G

**Preservatives**

IL-36G antibody is supplied in PBS containing 0.02% sodium azide.

**Form/Appearance**

Liquid

**Concentration**

1 mg/mL

**Storage**

IL-36G antibody can be stored at 4°C for three months and -20°C, stable for up to one year.

**Note**

For research use only

**Application notes**

IL-36G antibody can be used for detection of IL-36G by Western blot at 1 - 2 µg/ml. Antibody validated: Western Blot in human samples; Immunohistochemistry in human samples and Immunofluorescence in human samples. All other applications and species not yet tested.

**Isotype**

IgG

**Clonality**

Polyclonal

**MW**

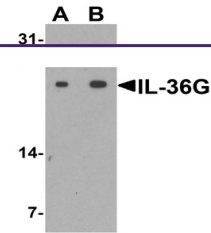
Predicted: 19 kDa Observed: 22 kDa

**Uniprot ID**
[Q9NZH8](#)
**NCBI**
[NP\\_062564](#)
**Dilution Range**

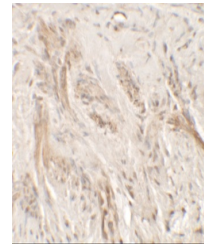
IL-36G antibody can be used for detection of IL-36G by Western blot at 1 - 2 µg/ml. Antibody validated: Western Blot in human samples; Immunohistochemistry in human samples and Immunofluorescence in human samples. All other applications and species not yet tested.

**Expiration Date**

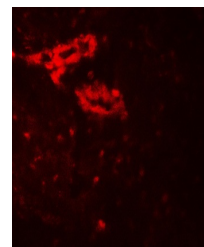
12 months from date of receipt.



Western blot analysis of IL-36G in human...



Immunohistochemistry of IL-36G in human ...



Immunofluorescence of IL-36G in human bl...