

---

## Product Datasheet

### NLRC4 Antibody (orb1239640)

**Description**

NLRC4 Antibody


**Species/Host**

Rabbit

**Reactivity**

Human

**Conjugation**

Unconjugated

**Tested**

ELISA, ICC, IF, WB

**Applications**
**Immunogen**

Ipaf antibody was raised against a synthetic peptide corresponding to amino acids near the C-terminus of human Ipaf. The immunogen is located within the last 50 amino acids of Ipaf.

**Target**

NLRC4

**Preservatives**

Ipaf Antibody is supplied in PBS containing 0.02% sodium azide.

**Form/Appearance**

Liquid

**Concentration**

1 mg/mL

**Storage**

Ipaf antibody can be stored at 4°C for three months and -20°C, stable for up to one year. As with all antibodies care should be taken to avoid repeated freeze thaw cycles. Antibodies should not be exposed to prolonged high temperatures.

**Note**

For research use only

**Application notes**

Ipaf polyclonal antibody can be used for the detection of Ipaf by Western blot at 1 and 2 µg/mL. A 110 kDa band can be detected. Antibody can also be used for immunocytochemistry starting at 10 µg/mL. For immunofluorescence start at 10 µg/mL. Antibody validated: Western Blot in human samples; Immunocytochemistry in human samples and Immunofluorescence in human samples. All other applications and species not yet tested.

**Isotype**

IgG

**Clonality**

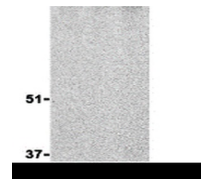
Polyclonal

**MW**

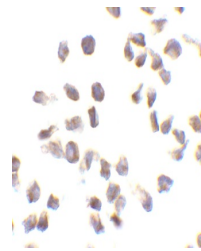
110 kDa

**Uniprot ID**
[Q9NPP4](#)
**NCBI**
[NP\\_067032](#)
**Dilution Range**

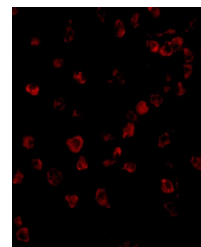
Ipaf polyclonal antibody can be used for the detection of Ipaf by Western blot at 1 and 2 µg/mL. A 110 kDa band can be detected. Antibody can also be used for immunocytochemistry starting at 10 µg/mL.



Western blot analysis of Ipaf in human P...



Immunocytochemistry of Ipaf in THP-1 cel...



Immunofluorescence of Ipaf in THP1 cells...