
Product Datasheet

MSI2 Antibody (orb1239634)

Description

MSI2 Antibody

Species/Host

Rabbit

Reactivity

Human, Mouse, Rat

Conjugation

Unconjugated

Tested Applications

ELISA, ICC, IF, IHC-P, WB

Immunogen

MSI2 antibody was raised against a 15 amino acid synthetic peptide near the amino terminus of human MSI2. The immunogen is located within amino acids 30 - 80 of MSI2.

Target

MSI2

Preservatives

MSI2 Antibody is supplied in PBS containing 0.02% sodium azide.

Form/Appearance

Liquid

Concentration

1 mg/mL

Storage

MSI2 antibody can be stored at 4 °C, stable for one year. As with all antibodies care should be taken to avoid repeated freeze thaw cycles. Antibodies should not be exposed to prolonged high temperatures.

Note

For research use only

Application notes

MSI2 antibody can be used for detection of MSI2 by Western blot at 1 µg/mL. Antibody can also be used for immunohistochemistry starting at 5 µg/mL and immunocytochemistry starting at 5 µg/mL. For immunofluorescence start at 5 µg/mL. Antibody validated: Western Blot in mouse samples; Immunohistochemistry in mouse samples; Immunocytochemistry in mouse samples and Immunofluorescence in mouse samples. All other applications and species not yet tested.

Isotype

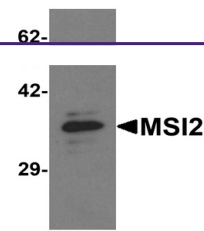
IgG

Clonality

Polyclonal

Uniprot ID
[Q96DH6](#)
NCBI
[EAW94506](#)
Dilution Range

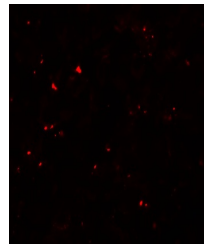
MSI2 antibody can be used for detection of MSI2 by Western blot at 1 µg/mL. Antibody can also be used for immunohistochemistry starting at 5 µg/mL and immunocytochemistry starting at 5 µg/mL. For immunofluorescence start at 5 µg/mL. Antibody



Western blot analysis of MSI2 in EL4 cel...



Immunocytochemistry of MSI2 in EL4 cells...



Immunofluorescence of MSI2 in EL4 cells ...