
Product Datasheet

mfSD2aa Antibody (orb1239631)

Description

mfsd2aa Antibody

Species/Host

Rabbit

Reactivity

Human, Mouse, Rat

Conjugation

Unconjugated

Tested Applications

ELISA, IF, IHC-P, WB

Immunogen

MFSD2A antibody was raised against an 18 amino acid synthetic peptide near the carboxy terminus of human MFSD2A. The immunogen is located within the last 50 amino acids of MFSD2A.

Target

mfsd2aa

Preservatives

MFSD2A Antibody is supplied in PBS containing 0.02% sodium azide.

Form/Appearance

Liquid

Concentration

1 mg/mL

Storage

MFSD2A antibody can be stored at 4°C up to one year. Antibodies should not be exposed to prolonged high temperatures.

Note

For research use only

Application notes

MFSD2A antibody can be used for detection of MFSD2A by Western blot at 1 - 2 µg/mL. Antibody can also be used for immunohistochemistry starting at 5 µg/mL. For immunofluorescence start at 20 µg/mL. Antibody validated: Western Blot in rat samples; Immunohistochemistry in human, mouse, and rat samples and Immunofluorescence in mouse and rat samples. All other applications and species not yet tested.

Isotype

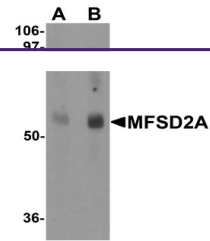
IgG

Clonality

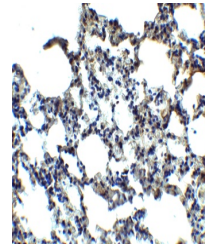
Polyclonal

Uniprot ID
[Q5U3U7](#)
NCBI
[NP_001129965](#)
Dilution Range

MFSD2A antibody can be used for detection of MFSD2A by Western blot at 1 - 2 µg/mL. Antibody can also be used for immunohistochemistry starting at 5 µg/mL. For immunofluorescence start at 20 µg/mL. Antibody validated: Western Blot in rat samples; Immunohistochemistry in human, mouse, and rat samples and Immunofluorescence in mouse

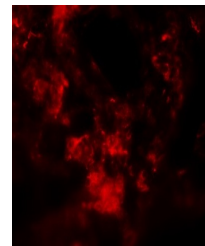


Western blot analysis of MFSD2A in rat l...



Immunohistochemistry of MFSD2A in mouse

...



Immunofluorescence of MFSD2A in Rat Lung...