

---

## Product Datasheet

### ERN1 Antibody (orb1239628)

**Description**

ERN1 Antibody

**Species/Host**

Rabbit

**Reactivity**

Human, Mouse, Rat

**Conjugation**

Unconjugated

**Tested Applications**

ELISA, ICC, IF, WB

**Immunogen**

IRE1p antibody was raised against a 15 amino acid synthetic peptide from near the amino terminus of human IRE1p. The immunogen is located within amino acids 150 - 200 of IRE1p.

**Target**

ERN1

**Preservatives**

IRE1p Antibody is supplied in PBS containing 0.02% sodium azide.

**Form/Appearance**

Liquid

**Concentration**

1 mg/mL

**Storage**

IRE1p antibody can be stored at 4°C for three months and -20°C, stable for up to one year. As with all antibodies care should be taken to avoid repeated freeze thaw cycles. Antibodies should not be exposed to prolonged high temperatures.

**Note**

For research use only

**Application notes**

IRE1p antibody can be used for the detection of IRE1p by Western blot at 0.5 - 2 µg/mL. Antibody can also be used for immunocytochemistry starting at 1 µg/mL. For immunofluorescence start at 10 µg/mL. Antibody validated: Western Blot in mouse samples; Immunocytochemistry in mouse samples and Immunofluorescence in mouse samples. All other applications and species not yet tested.

**Isotype**

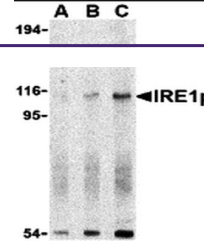
IgG

**Clonality**

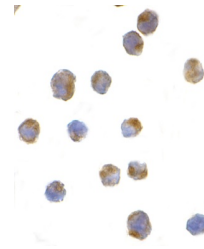
Polyclonal

**Uniprot ID**
[O75460](#)
**NCBI**
[O75460](#)
**Dilution Range**

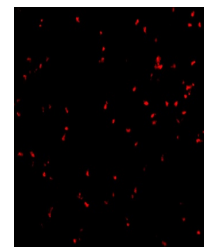
IRE1p antibody can be used for the detection of IRE1p by Western blot at 0.5 - 2 µg/mL. Antibody can also be used for immunocytochemistry starting at 1 µg/mL. For immunofluorescence start at 10 µg/mL. Antibody validated: Western Blot in mouse samples; Immunocytochemistry in mouse samples



Western blot analysis of IRE1p in A-20 c...



Immunocytochemistry of IRE1p in A20 cell...



Immunofluorescence of IRE1p in A20 cells...