

---

## Product Datasheet

### IRGC Antibody (orb1239616)

**Description**

IRGC Antibody

**Species/Host**

Rabbit

**Reactivity**

Human, Mouse, Rat

**Conjugation**

Unconjugated

**Tested Applications**

ELISA, ICC, IF, WB

**Immunogen**

IRGC antibody was raised against a 12 amino acid synthetic peptide near the carboxy terminus of human IRGC. The immunogen is located within the last 50 amino acids of IRGC.

**Target**

IRGC

**Preservatives**

IRGC Antibody is supplied in PBS containing 0.02% sodium azide.

**Form/Appearance**

Liquid

**Concentration**

1 mg/mL

**Storage**

IRGC antibody can be stored at 4°C for three months and -20°C, stable for up to one year. As with all antibodies care should be taken to avoid repeated freeze thaw cycles. Antibodies should not be exposed to prolonged high temperatures.

**Note**

For research use only

**Application notes**

IRGC antibody can be used for detection of IRGC by Western blot at 1 - 2 µg/mL. Antibody can also be used for immunocytochemistry starting at 2.5 µg/mL. For immunofluorescence start at 20 µg/mL. Antibody validated: Western Blot in mouse samples; Immunocytochemistry in mouse samples and Immunofluorescence in mouse samples. All other applications and species not yet tested.

**Isotype**

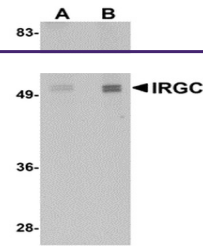
IgG

**Clonality**

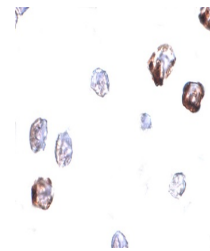
Polyclonal

**Uniprot ID**
[Q6NXR0](#)
**NCBI**
[NP\\_062558](#)
**Dilution Range**

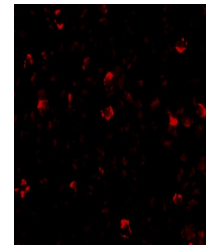
IRGC antibody can be used for detection of IRGC by Western blot at 1 - 2 µg/mL. Antibody can also be used for immunocytochemistry starting at 2.5 µg/mL. For immunofluorescence start at 20 µg/mL. Antibody validated: Western Blot in mouse samples; Immunocytochemistry in mouse samples and



Western blot analysis of IRGC in mouse brain tissue.



Immunocytochemistry of IRGC in A20 cells.



Immunofluorescence of IRGC in A20 cells.